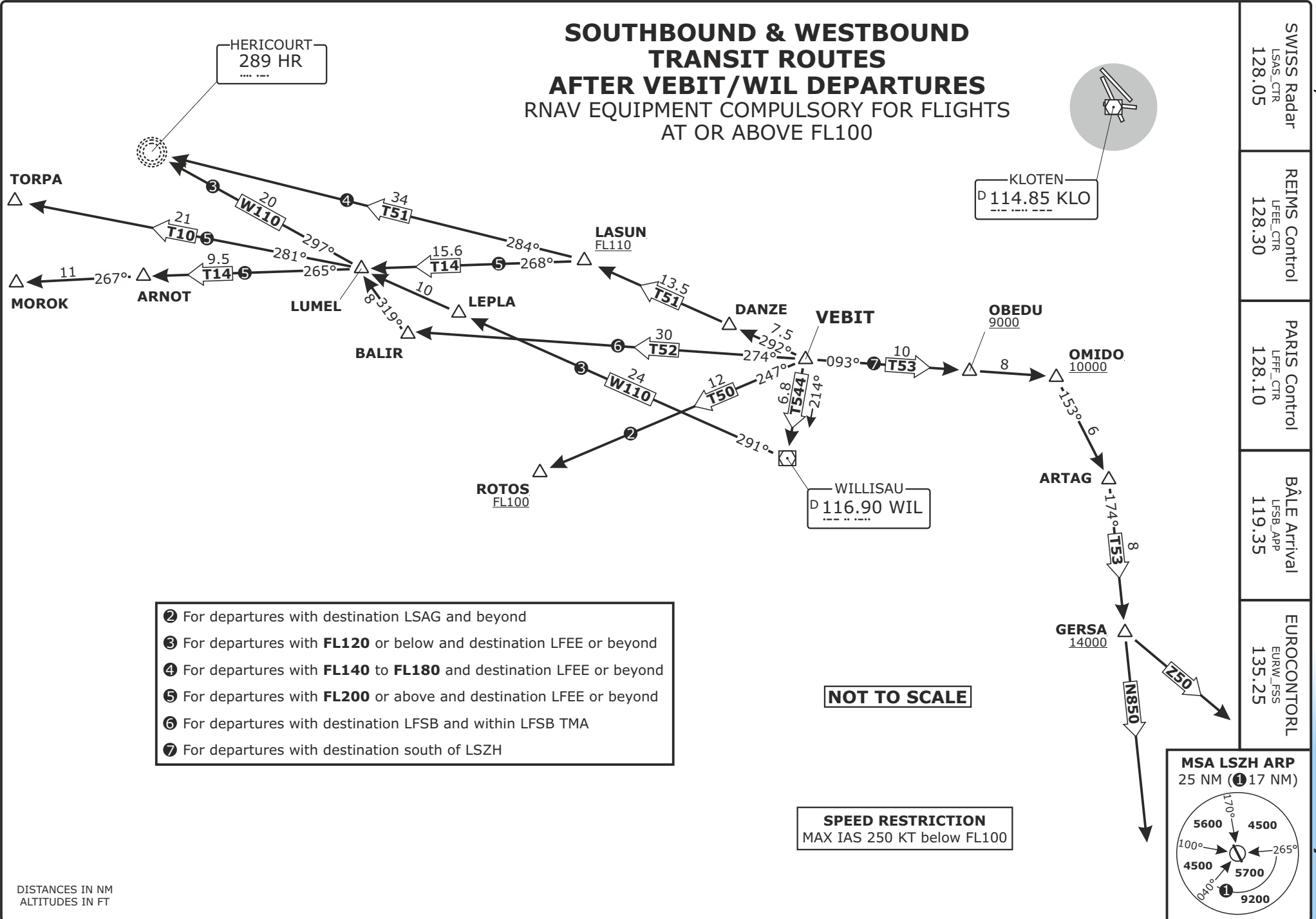


**SOUTHBOUND & WESTBOUND
TRANSIT ROUTES
AFTER VEBIT/WIL DEPARTURES**
RNAV EQUIPMENT COMPULSORY FOR FLIGHTS
AT OR ABOVE FL100



- ② For departures with destination LSAG and beyond
- ③ For departures with **FL120** or below and destination LFEE or beyond
- ④ For departures with **FL140** to **FL180** and destination LFEE or beyond
- ⑤ For departures with **FL200** or above and destination LFEE or beyond
- ⑥ For departures with destination LFSB and within LFSB TMA
- ⑦ For departures with destination south of LSZH

NOT TO SCALE

SPEED RESTRICTION
MAX IAS 250 KT below FL100

