

LSGG/GVA
GENEVA, SWITZERLAND

APCH CHART NO. 05
Revision 02 NOV 23

LOC DME
RWY 22

Frequencies		
Swiss Radar	134.600	134.850
	124.225	128.905
Geneva Arrival	136.255	-
Geneva Final	120.305	-
Geneva Tower	118.700	-
Geneva Apron	121.855	-
Geneva ATIS	135.580	-

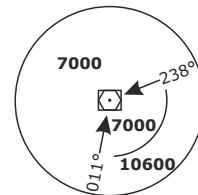
Missed Approach

Climb straight ahead on RWY axis. Follow R224 GVA outbound.
At D9.5 GVA past the station, turn **LEFT** (MAX IAS 185 KT) to intercept R037 CBY outbound.
Climb to **7000**.
Proceed to SPR.

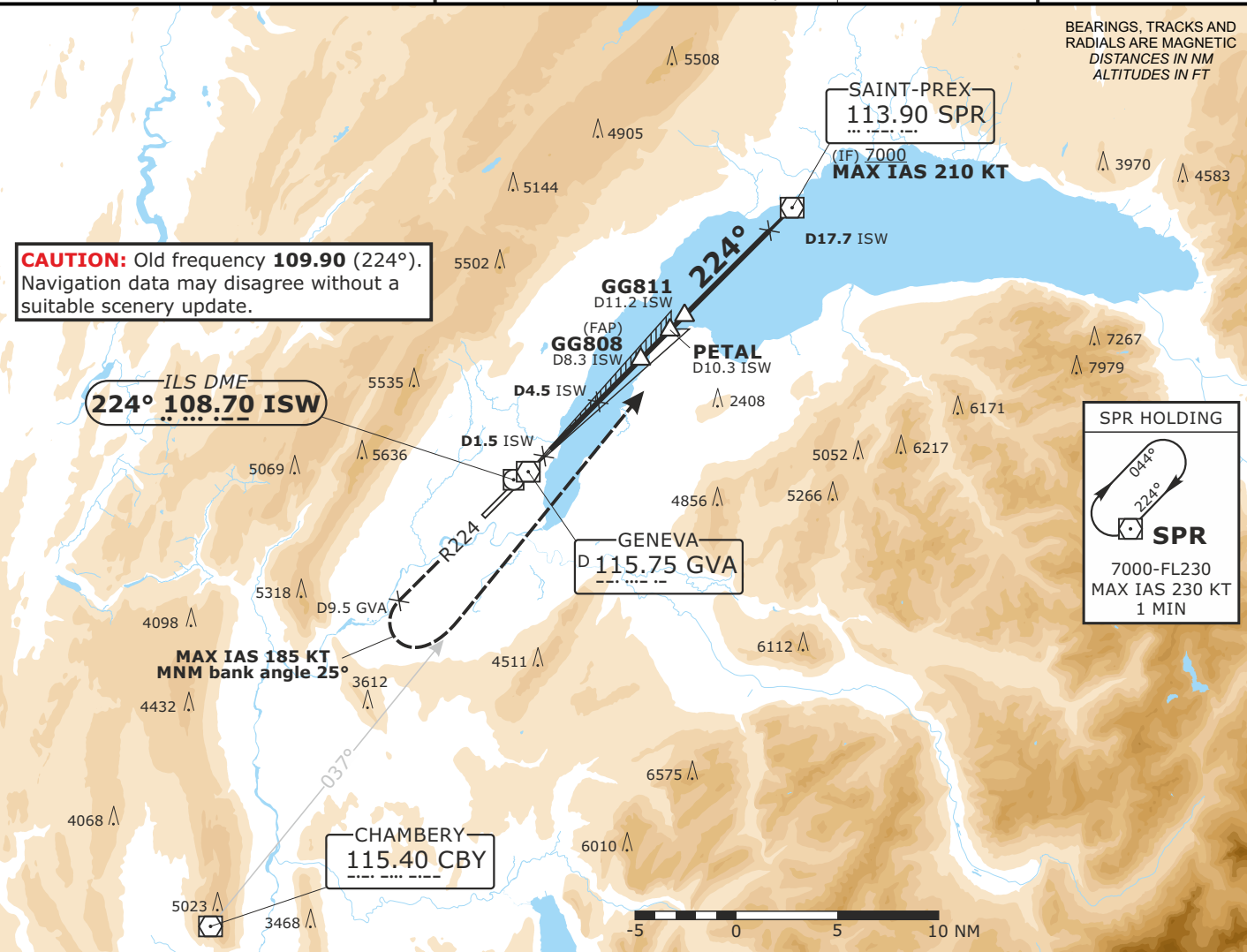
AD ELEV 1411ft TRANS LVL by ATC TRANS ALT 7000

MSA GVA

Outer Circle: 25 NM
Inner Circle: 10 NM

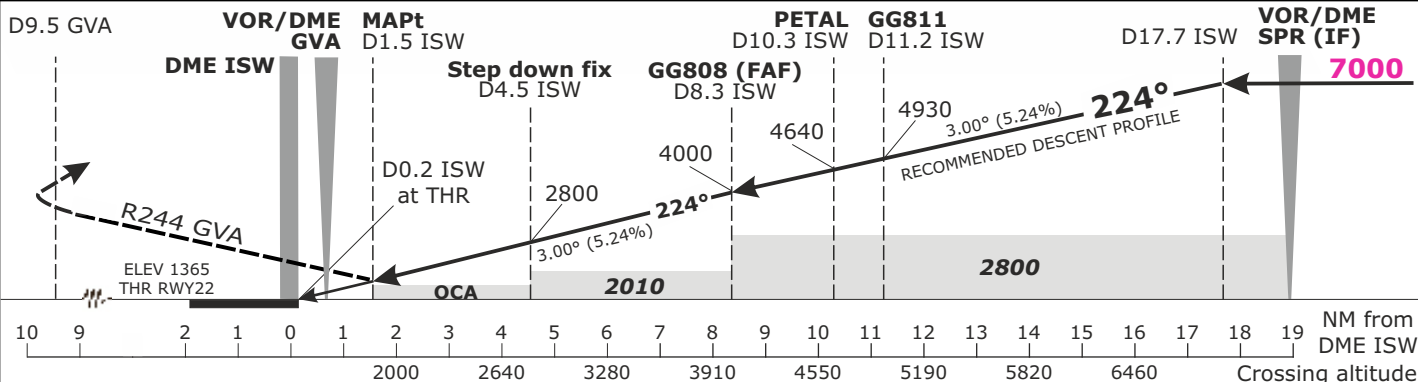
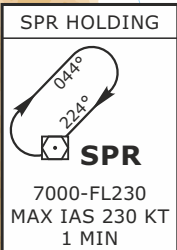


BEARINGS, TRACKS AND RADIALS ARE MAGNETIC
DISTANCES IN NM
ALTITUDES IN FT



CAUTION: Old frequency **109.90** (224°).
Navigation data may disagree without a
suitable scenery update.

ILS DME
224° 108.70 ISW



Minima

MDA (H)				RVR
CAT A	CAT B	CAT C	CAT D	
1840 (475)				1500m

Changes: Frequencies, MSA, RDL CBY