

ROCCA
NON-RNAV DEPARTURES
RWY 04, 22

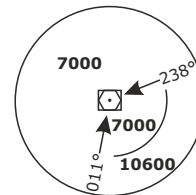
ONLY FOR TRAFFIC
WITH DESTINATION OR
OVERFLYING ITALY
PLANNED BELOW FL200 (G32)

Frequencies

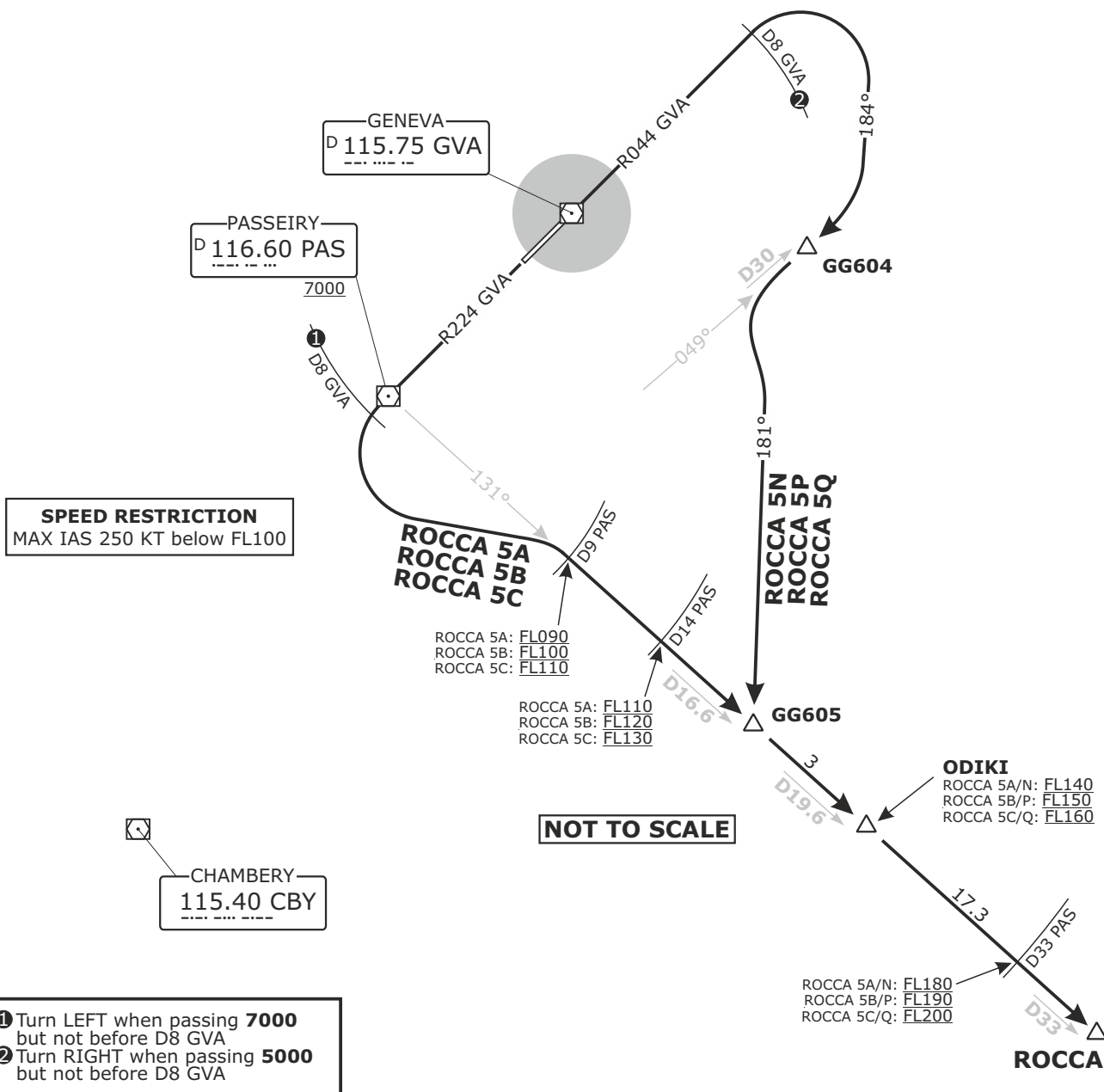
	134.600	134.850
Swiss Radar	128.905	124.225
	134.030	-
Geneva Arrival	136.255	-
Geneva Departure	119.530	-
Geneva ATIS	135.580	-
AD ELEV 1411ft	TRANS ALT 7000	

MSA GVA

Outer Circle: 25 NM
Inner Circle: 10 NM



Valid for flight simulation use only - do not use for real life navigation



DISTANCES IN NM
ALTITUDES IN FT

Altitude and speed restrictions see graphical chart

Initial climb clearance FL90

SID	RWY	ROUTING
ROCCA 5A ROCCA 5B ROCCA 5C	22	Climb on R224 GVA. When passing 7000 but not before D8 GVA, turn LEFT. Intercept R131 from PAS. Proceed via ODIKI to ROCCA.
ROCCA 5N ROCCA 5P ROCCA 5Q	04	Climb on R044 GVA. When passing 5000 but not before D8 GVA, turn RIGHT onto track 184°. Intercept R049 to CBY. At GG604 turn LEFT onto track 181°. Intercept R131 from PAS. Proceed via GG605 and ODIKI to ROCCA.