

LSZH/ZRH
ZURICH, SWITZERLAND

SID CHART NO. 10-1
Revision 20 MAR 25

RNP 1 SID
RWY 10

Frequencies

Swiss Radar	135.015	133.050
	128.050	133.905
	135.680	-
Zurich Arrival	135.230	130.560
Zurich Departure	125.955	-
Zurich ATIS	125.730	-

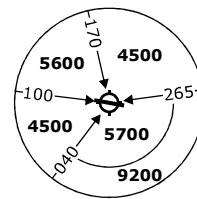
Navigation Specification

RNP 1 & RF required

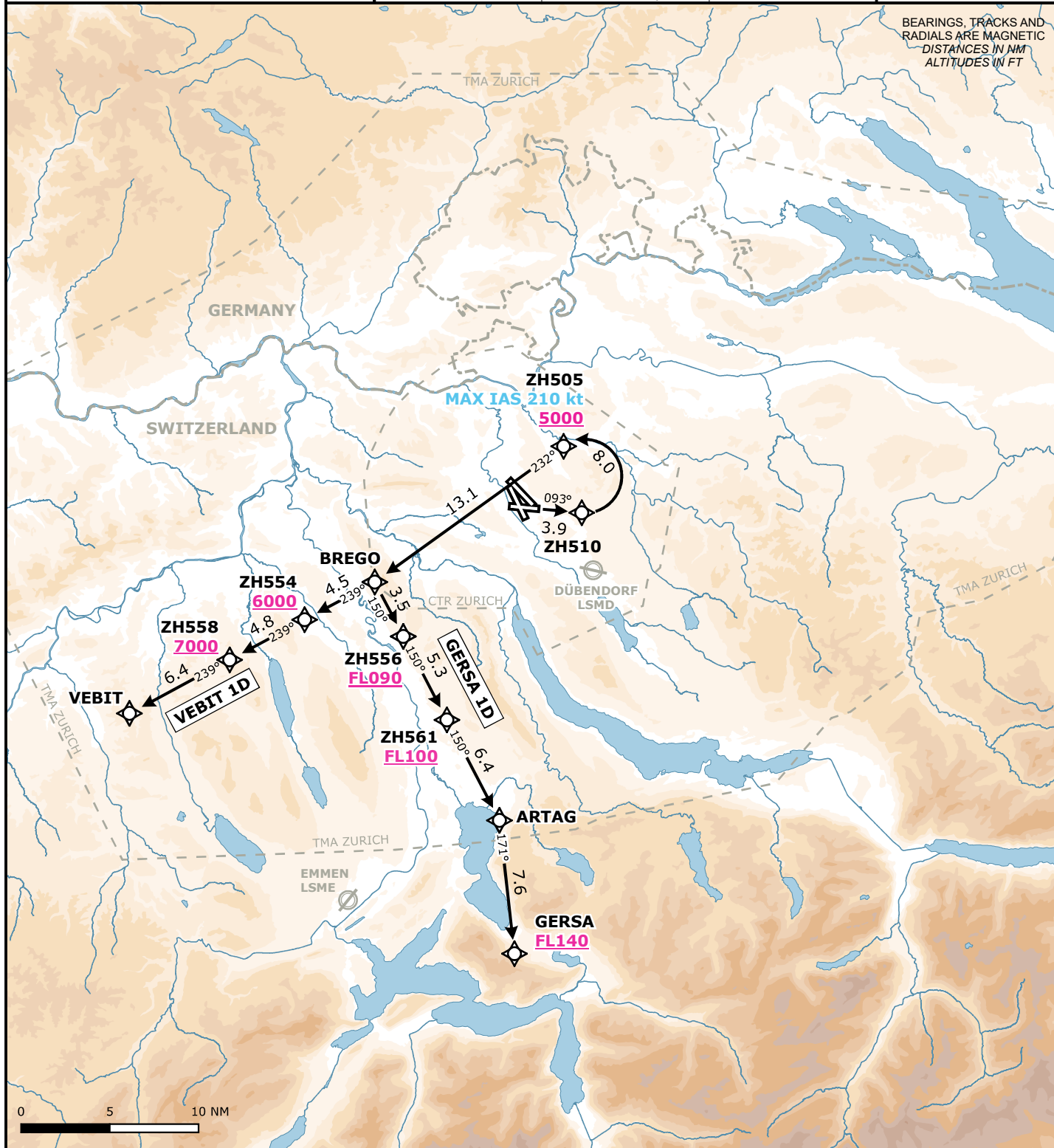
Initial climb clearance 5000 ft

AD ELEV 1417 ft | TRANS LVL by ATC | TRANS ALT 7000 ft

MSA LSZH ARP
Outer Circle: 25 NM
Inner Circle: 17 NM



BEARINGS, TRACKS AND
RADIALS ARE MAGNETIC
DISTANCES IN NM
ALTITUDES IN FT



RWY	SID	Lateral Routing	Vertical Routing
10	GERSA 1D	Climb straight ahead to ZH510. At ZH510 turn left to ZH505 (MAX IAS 210 kt). At ZH505 proceed via BREGO, ZH556, ZH561, ARTAG to GERSA.	INITIAL CLIMB CLEARANCE 5000 ft. Cross ZH505 at 5000 ft or above, ZH556 at FL090 or above, ZH561 at FL100 or above, GERSA at FL140 or above.
10	VEBIT 1D	Climb straight ahead to ZH510. At ZH510 turn left to ZH505 (MAX IAS 210 kt). At ZH505 proceed via BREGO, ZH554, ZH558 to VEBIT.	INITIAL CLIMB CLEARANCE 5000 ft. Cross ZH505 at 5000 ft or above, ZH554 at 6000ft or above, ZH558 at 7000ft or above.

Valid for flight simulation use only - do not use for real life navigation

Changes: CTR & TMA boundaries