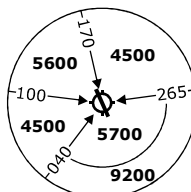
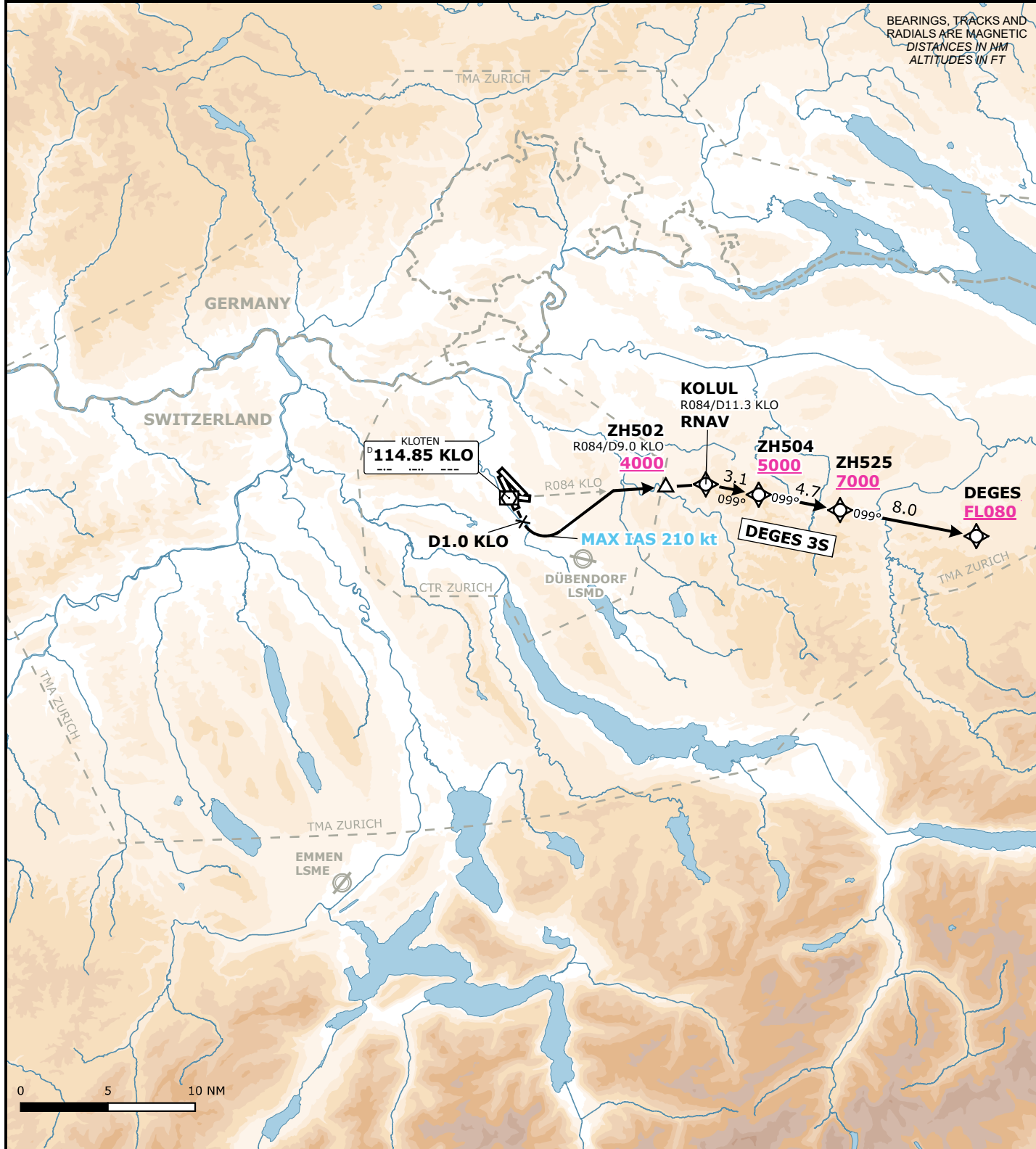


LSZH/ZRH
ZURICH, SWITZERLAND

SID CHART NO. 16-1
Revision 20 MAR 25

SID
RWY 16

| Frequencies | | | Remarks | | | MSA LSZH ARP Outer Circle: 25 NM Inner Circle: 17 NM  |
|------------------|---------|---------|--|------------------|-------------------|--|
| Swiss Radar | 135.015 | 133.050 | RNAV 1 applicable when passing KOLUL | | | |
| | 128.050 | 133.905 | | | | |
| | 135.680 | - | | | | |
| Zurich Arrival | 135.230 | 130.560 | Initial climb clearance 5000 ft | | | |
| Zurich Departure | 125.955 | - | | | | |
| Zurich ATIS | 125.730 | - | | | | |
| | | | AD ELEV 1417 ft | TRANS LVL by ATC | TRANS ALT 7000 ft | |



| RWY | SID | Lateral Routing | Vertical Routing |
|-----|----------|---|---|
| 16 | DEGES 3S | Climb straight ahead. Turn left at 2000 ft but not before D1 KLO (MAX IAS 210 kt). Intercept R084 KLO. Proceed via ZH502, KOLUL, ZH504, ZH525 to DEGES. | Initial climb clearance 5000 ft. Cross ZH502 at 4000 ft or above, ZH504 at 5000 ft or above, ZH525 at 7000 ft or above, DEGES at FL080 or above. |

Valid for flight simulation use only - do not use for real life navigation

Changes: CTR & TMA boundaries