

LSZH/ZRH
ZURICH, SWITZERLAND

SID CHART NO. 34-1
Revision 20 MAR 25

RNP 1 SID
RWY 34

Frequencies

Swiss Radar	135.015	133.050
	128.050	133.905
	135.680	-
Zurich Arrival	135.230	130.560
Zurich Departure	125.955	-
Zurich ATIS	125.730	-

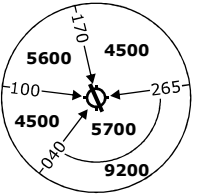
Remarks

RF required.
RNP 1 Certification required.

Initial climb clearance 5000 ft

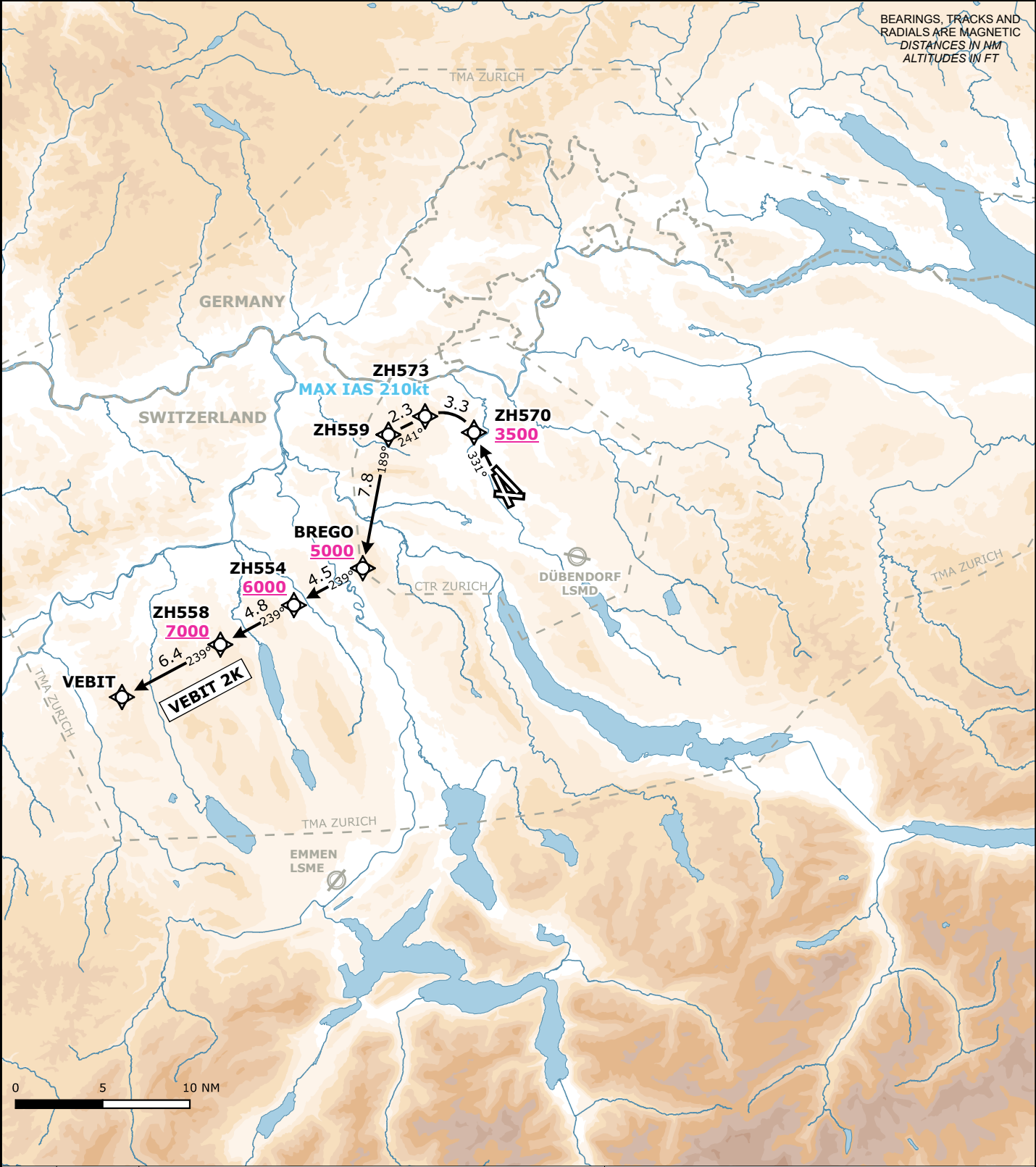
AD ELEV 1417 ft | TRANS LVL by ATC | TRANS ALT 7000 ft

MSA LSZH ARP
Outer Circle: 25 NM
Inner Circle: 17 NM



BEARINGS, TRACKS AND
RADIALS ARE MAGNETIC
DISTANCES IN NM
ALTITUDES IN FT

Valid for flight simulation use only - do not use for real life navigation



RWY	SID	Lateral Routing	Vertical Routing
34	VEBIT 2K	Climb on course 331. Proceed via ZH570, ZH573, ZH559, BREGO, ZH554, ZH558 to VEBIT. (MAX IAS 210 kt until ZH573).	Initial climb clearance 5000 ft. Cross ZH570 at 3500 ft or above, BREGO at 5000 ft or above, ZH554 at 6000 ft or above, ZH558 at 7000 ft or above.

Changes: CTR & TMA boundaries