

LSZH/ZRH

ZURICH, SWITZERLAND

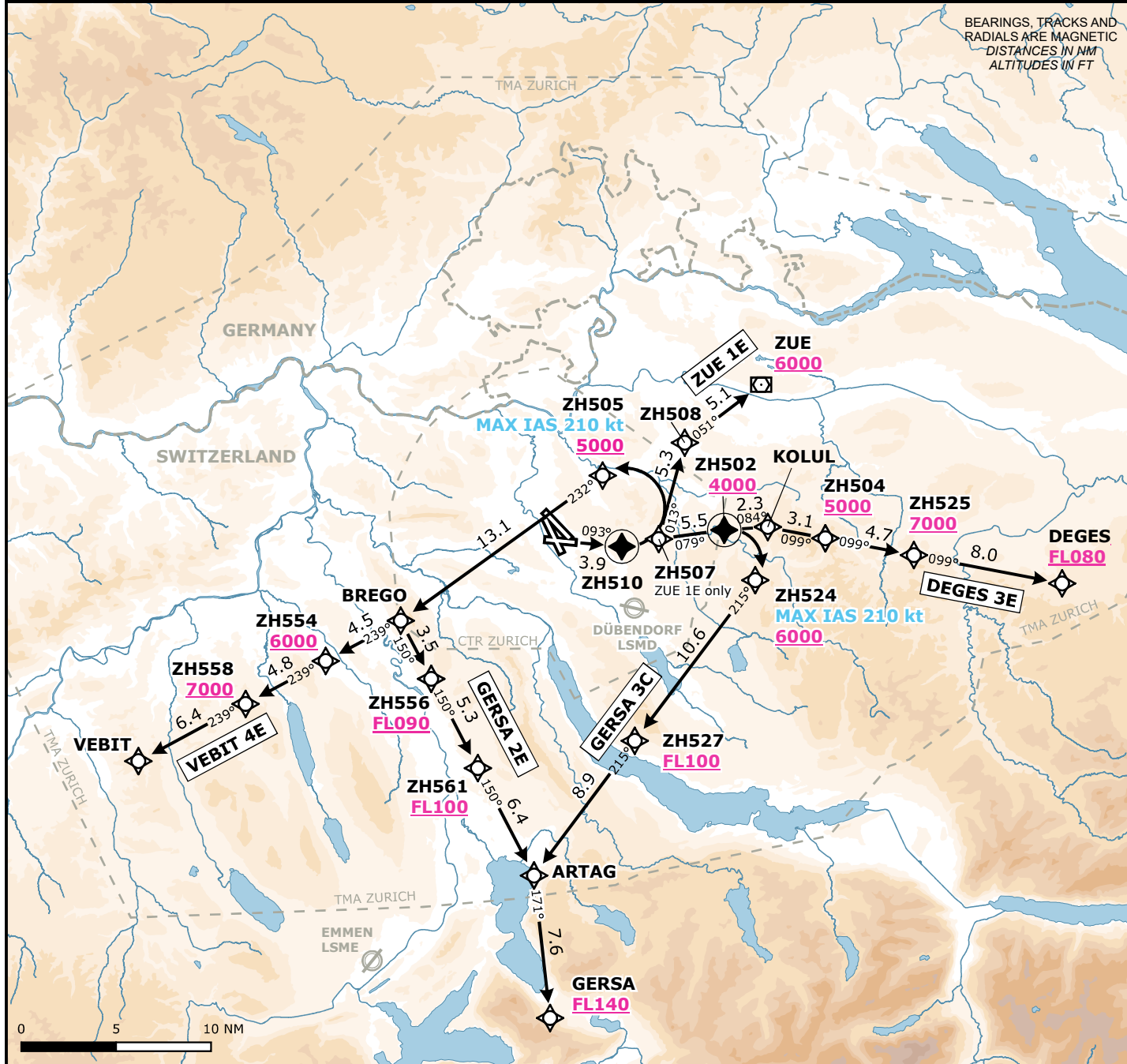
SID CHART NO. 10-2
Revision 20 MAR 25

RNAV 1 SID

RWY 10

Frequencies		Navigation Specification			MSA LSZH ARP	
Swiss Radar	135.015	133.050	RNAV 1 Certification required.			Outer Circle: 25 NM Inner Circle: 17 NM
	128.050	133.905				
	135.680	-				
Zurich Arrival	135.230	130.560	Initial climb clearance 5000 ft AD ELEV 1417 ft TRANS LVL by ATC TRANS ALT 7000 ft			
Zurich Departure	125.955	-				
Zurich ATIS	125.730	-				

Valid for flight simulation use only - do not use for real life navigation



RWY	SID	Lateral Routing	Vertical Routing
10	DEGES 3E	Climb straight ahead to ZH510. At ZH510 turn left to ZH502. At ZH502 turn right to KOLUL. At KOLUL proceed via ZH504, ZH525 to DEGES.	INITIAL CLIMB CLEARANCE 5000 ft. Cross ZH502 at 4000 ft or above, ZH504 at 5000 ft or above, ZH525 at 7000 ft or above, DEGES at FL080 or above.
10	GERSA 3C	Climb straight ahead to ZH510. At ZH510 turn left to ZH502. At ZH502 turn right to ZH524 (MAX IAS 210 kt). At ZH524 proceed via ZH527, ARTAG to GERSA.	INITIAL CLIMB CLEARANCE 5000 ft. Cross ZH502 at 4000 ft or above, ZH524 at 6000 ft or above, ZH527 at FL100 or above, GERSA at FL140 or above.
10	GERSA 2E	Climb straight ahead to ZH510. At ZH510 turn left to ZH505 (MAX IAS 210 kt). At ZH505 proceed via BREGO, ZH556, ZH561, ARTAG to GERSA.	INITIAL CLIMB CLEARANCE 5000 ft. Cross ZH505 at 5000 ft or above, ZH556 at FL090 or above, ZH561 at FL100 or above, GERSA at FL140 or above.
10	VEBIT 4E	Climb straight ahead to ZH510. At ZH510 turn left to ZH505 (MAX IAS 210 kt). At ZH505 proceed via BREGO, ZH554, ZH558 to VEBIT.	INITIAL CLIMB CLEARANCE 5000 ft. Cross ZH505 at 5000 ft or above, ZH554 at 6000 ft or above, ZH558 at 7000 ft or above.
10	ZUE 1E	Climb straight ahead to ZH510. At ZH510 turn left to ZH507. At ZH507 proceed via ZH508 to ZUE.	INITIAL CLIMB CLEARANCE 5000 ft. Cross ZUE at 6000 ft or above.

Changes: CTR & TMA boundaries