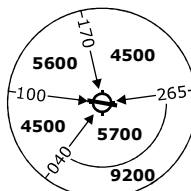


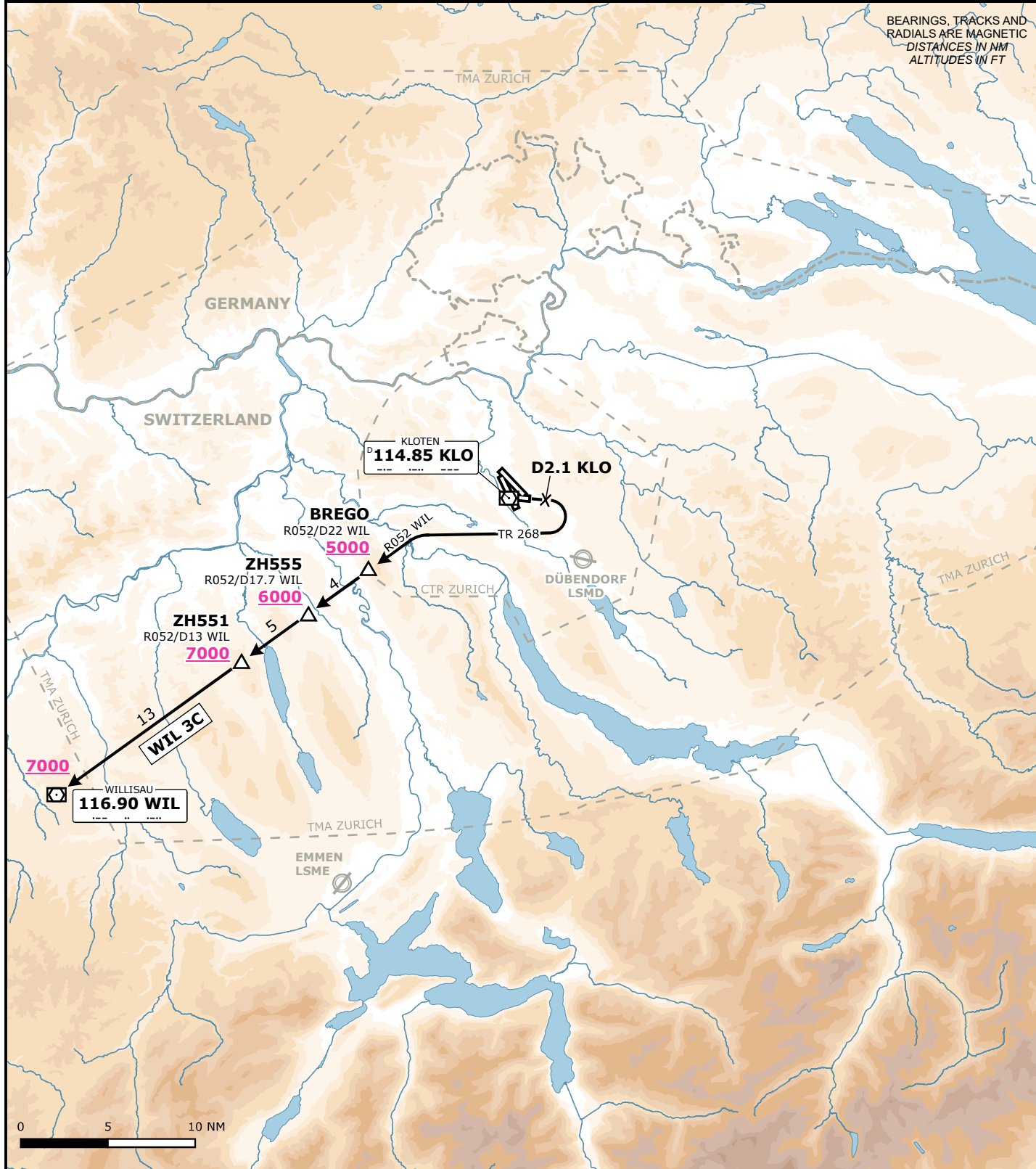
LSZH/ZRH
ZURICH, SWITZERLAND

SID CHART NO. 10-3
Revision 20 MAR 25

NON-RNAV SID

RWY 10

Frequencies			Remarks			<div>MSA LSZH ARP</div> <div>Outer Circle: 25 NM</div> <div>Inner Circle: 17 NM</div> <div></div>
Swiss Radar	135.015	133.050	The departure is allocated to propeller aircraft only and requires visual conditions as specified.			
	128.050	133.905				
	135.680	-	Visual Conditions for departure: SID is allocated only if the lowest cloud layer is reported above 3000 ft AGL.			
Zurich Arrival	135.230	130.560				
Zurich Departure	125.955	-	Initial climb clearance 5000 ft			
Zurich ATIS	125.730	-	AD ELEV 1417 ft	TRANS LVL by ATC	TRANS ALT 7000 ft	



RWY	SID	Lateral Routing	Vertical Routing
10	WIL 3C	Climb straight ahead. Short visual right turn, but not before D2.1 KLO or when instructed by ATC. Turn within 2NM south of RWY 10. Establish TR268 to intercept R052 WIL. Proceed via BREGO, ZH555, ZH551 to WIL.	INITIAL CLIMB CLEARANCE 5000 ft. Maintain visual ground contact to 4400 ft. Cross BREGO at 5000 ft or above, ZH555 at 6000 ft or above, ZH551 at 7000 ft or above.

Valid for flight simulation use only - do not use for real life navigation

Changes: CTR & TMA boundaries