

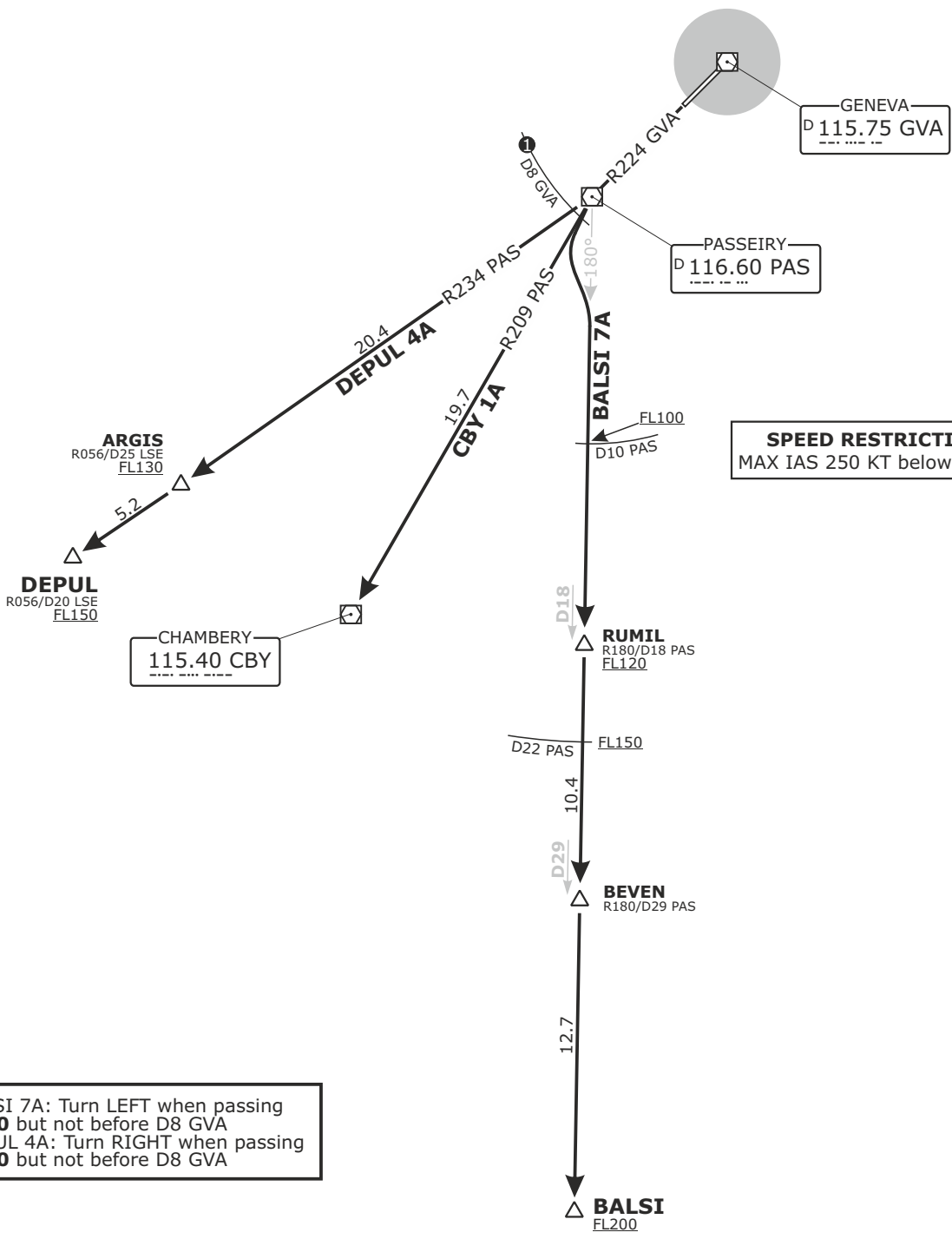
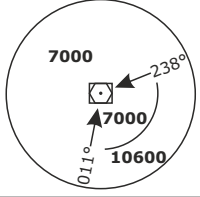
**BALSI, CHAMBERY, DEPUL**  
NON-RNAV DEPARTURES  
RWY 22

**Frequencies**

	134.600	134.850
Swiss Radar	128.905	124.225
	134.030	-
Geneva Arrival	136.255	-
Geneva Departure	119.530	-
Geneva ATIS	135.580	-
AD ELEV 1411ft	TRANS ALT 7000	

**MSA GVA**

Outer Circle: 25 NM  
Inner Circle: 10 NM



**SPEED RESTRICTION**  
MAX IAS 250 KT below FL100

① BALSI 7A: Turn LEFT when passing 7000 but not before D8 GVA  
DEPUL 4A: Turn RIGHT when passing 7000 but not before D8 GVA

DISTANCES IN NM  
ALTITUDES IN FT

Altitude and speed restrictions see graphical chart

SID	RWY	ROUTING	INITIAL CLIMB
BALSI 7A	22	Climb on R224 GVA. When passing 7000 but not before D8 GVA, turn LEFT. Intercept R180 from PAS. Proceed via RUMIL and BEVEN to BALSI.	FL90
CBY 1A		Climb on R224 GVA. At D8 GVA, turn LEFT. Intercept R209 from PAS to CBY.	FL80
DEPUL 4A		Climb on R224 GVA. When passing 7000 but not before D8 GVA, turn RIGHT. Intercept R234 from PAS. Proceed via ARGIS to DEPUL.	FL90

Valid for flight simulation use only - do not use for real life navigation

CHANGES: Frequencies, MSA, BALSI procedures withdrawn, CBY procedures established