

Valid for flight simulation use only - do not use for real life

LSGG/GVA
GENEVA, SWITZERLAND

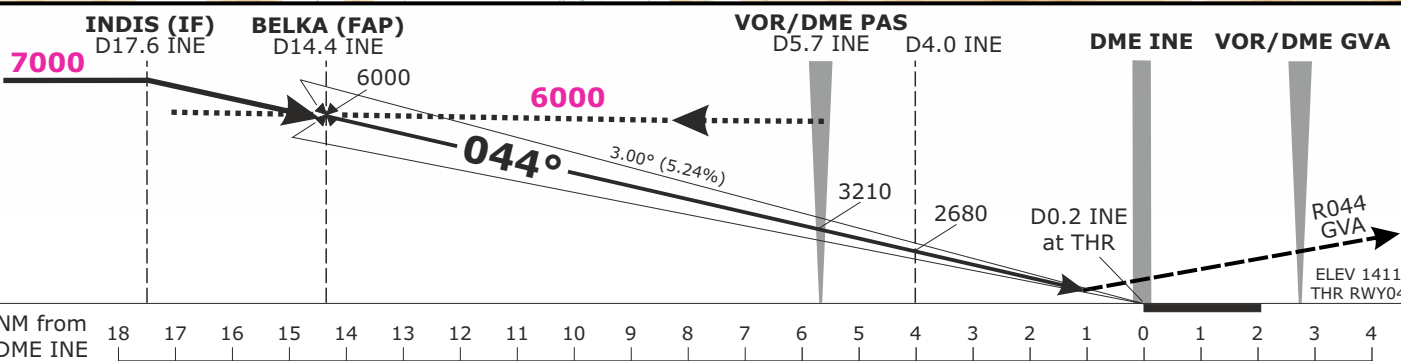
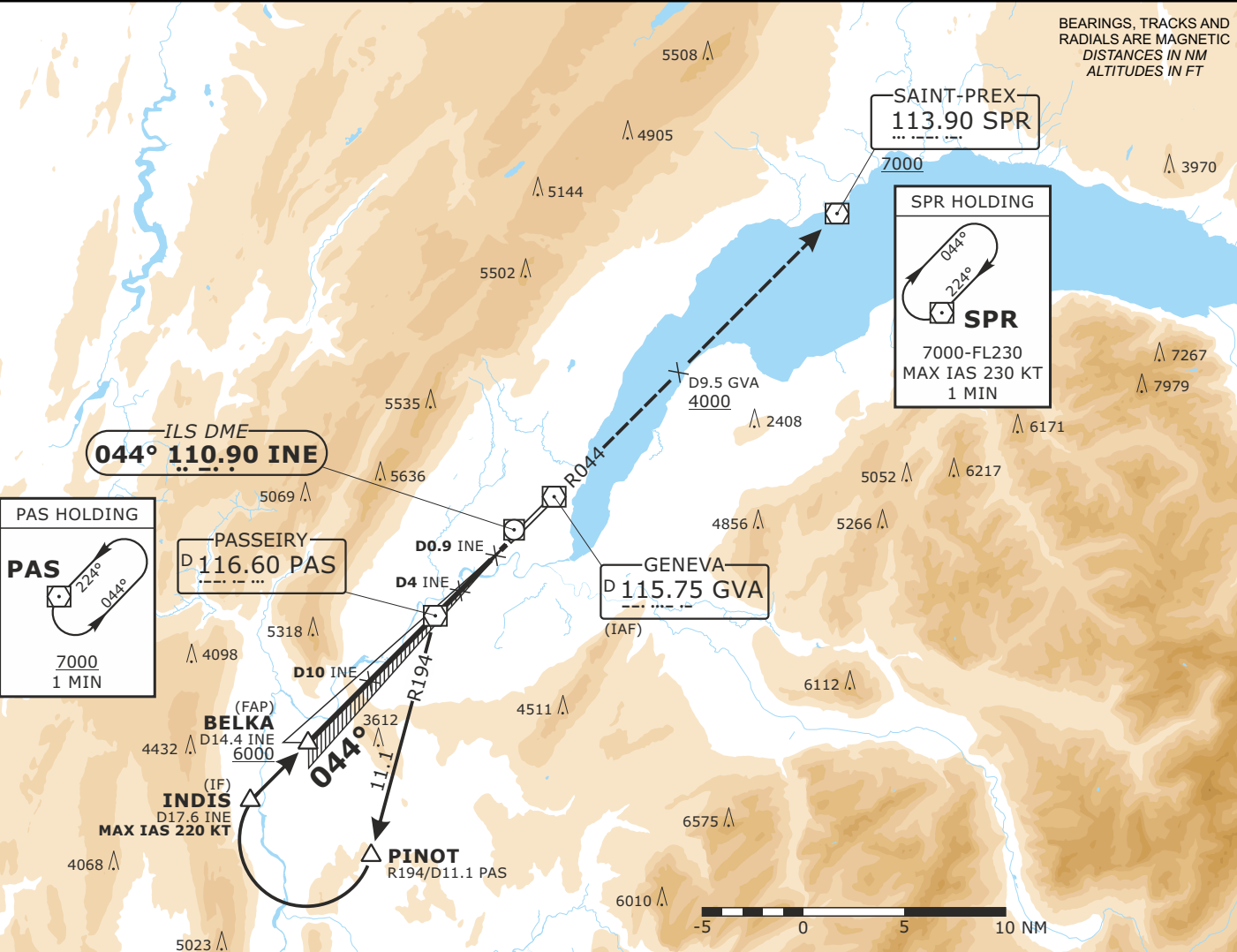
APCH CHART NO. 01
Revision 02 NOV 23

ILS DME
RWY 04

Frequencies		
Swiss Radar	134.600	134.850
	124.225	128.905
Geneva Arrival	136.255	-
Geneva Final	120.305	-
Geneva Tower	118.700	-
Geneva Apron	121.855	-
Geneva ATIS	135.580	-

Missed Approach		
Climb straight ahead on RWY axis. Follow R044 GVA outbound.		
Cross D9.5 GVA past the station at 4000 or above.		
Climb to 7000 . Proceed to SPR.		
AD ELEV 1411ft	TRANS LVL by ATC	TRANS ALT 7000

MSA GVA
Outer Circle: 25 NM
Inner Circle: 10 NM



Minima						
	DA (H)				RA	RVR
	CAT A	CAT B	CAT C	CAT D		
CAT I	1611 (200)		1617 (206)	1627 (216)		550m

Changes: Frequencies, MSA