

BENOT, ULMES
RNAV 1 ARRIVALS
RWY 04

NOT TO SCALE

SPEED RESTRICTION
MAX IAS 250 KT below FL100

GVA HOLDING

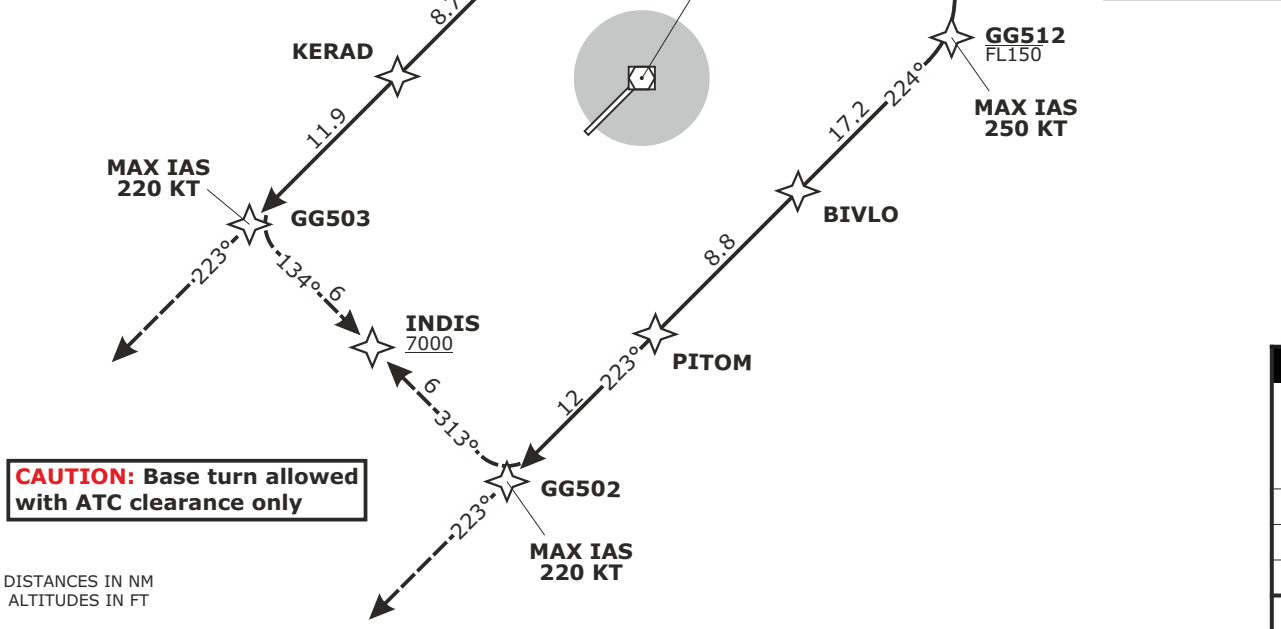
GVA
7000-FL150
MAX IAS 230 KT
1 MIN

NEMOS HOLDING

NEMOS
FL110-FL230
MAX IAS 230 KT
1 MIN
by ATC only

VADAR HOLDING

VADAR
FL100-FL230
MAX IAS 230 KT
1 MIN
by ATC only



Altitude and speed restrictions see graphical chart

STAR	ROUTING
BENOT 1N	BENOT - NEMOS - GG514 - SOVAD - KERAD - GG503
BENOT 1P	BENOT - NEMOS - VADAR - GG512 - BIVLO - PITOM - GG502
ULMES 1N	ULMES - ESEVA - VADAR - GG514 - SOVAD - KERAD - GG503
ULMES 1P	ULMES - ESEVA - VADAR - GG512 - BIVLO - PITOM - GG502

Frequencies		
	128.905	124.225
Swiss Radar	134.850	134.600
	-	-
Geneva Arrival	136.255	-
Geneva Final	120.305	-
Geneva ATIS	135.580	-
AD ELEV 1411ft	TRANS LVL by ATC	

MSA GVA
Outer Circle: 25 NM
Inner Circle: 10 NM