

LSMD DUBENDORF (MIL)

DUBENDORF, SWITZERLAND

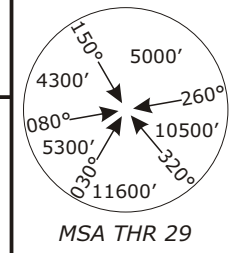
Swiss Radar
LSAS_CTR
128.05

DUB Radar
LSMD_APP
134.92

Zurich Arrival
LSZH_APP
120.75

Apt Elev
1450'

Alt Set: hPa (IN on request)
Trans level: by ATC
Trans alt: 7000'



WILLISAU 3 ALPHA (WIL 3A) ZURICH EAST 3 ALPHA (ZUE 3A) ARRIVALS TO VIBAX HOLDING

NOT TO SCALE

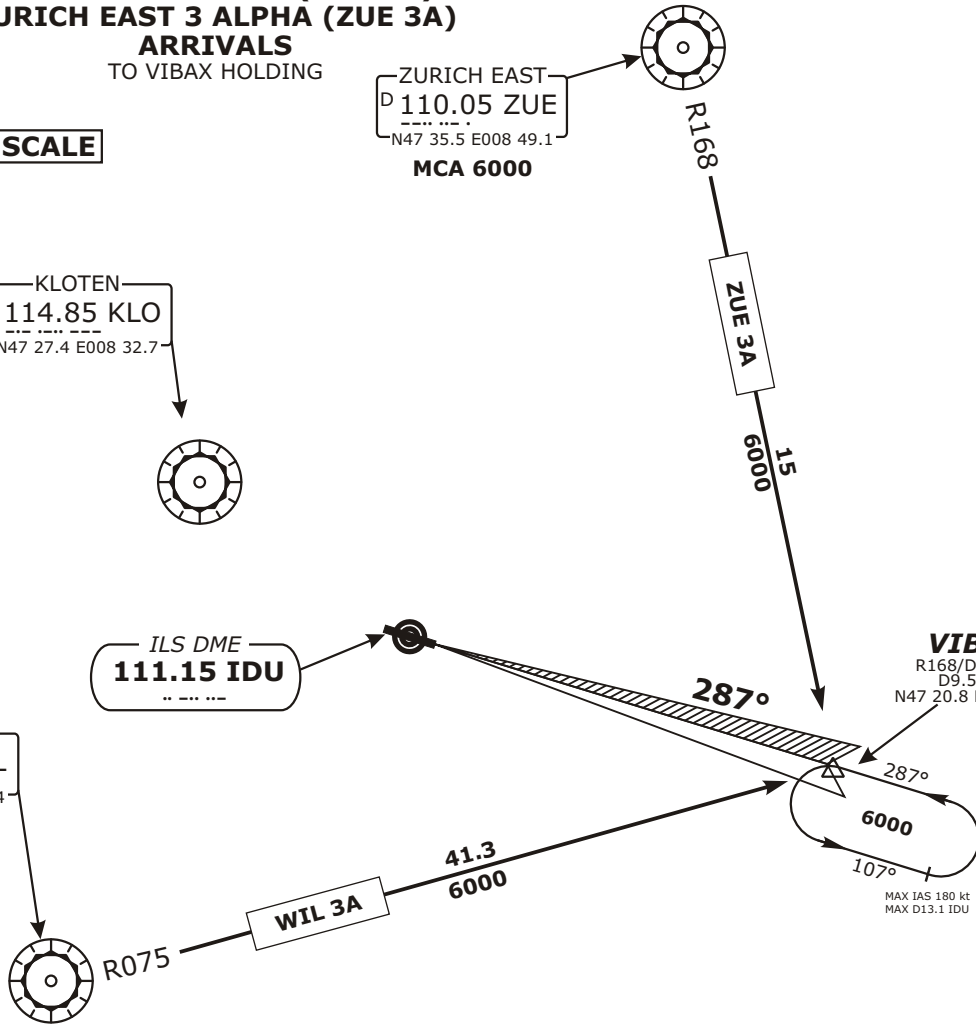
ZURICH EAST
D 110.05 ZUE
N47 35.5 E008 49.1
MCA 6000

KLOTEN
D 114.85 KLO
N47 27.4 E008 32.7

ILS DME
111.15 IDU
.. --- ..

WILLISAU
D 116.90 WIL
N47 10.7 E007 54.4
MCA 6000

VIBAX
R168/D15 ZUE
D9.5 IDU
N47 20.8 E008 53.1



COR: Editorial

WIL 3A

At WIL (MCA 6000) intercept R075 WIL. Proceed to VIBAX.

ZUE 3A

At ZUE (MCA 6000) intercept R168 ZUE. Proceed to VIBAX.

COM FAILURE
PROC

Set transponder code 7600.
Proceed via STAR to VIBAX. At last received or acknowledged EAT or, if no EAT has been received or acknowledged at FPL ETA, descend in the VIBAX holding pattern to 6000.
Carry out STANDARD INSTRUMENT APCH for RWY in use.

Valid for flight simulation use only - do not use for real life navigation