

LSZH/ZRH

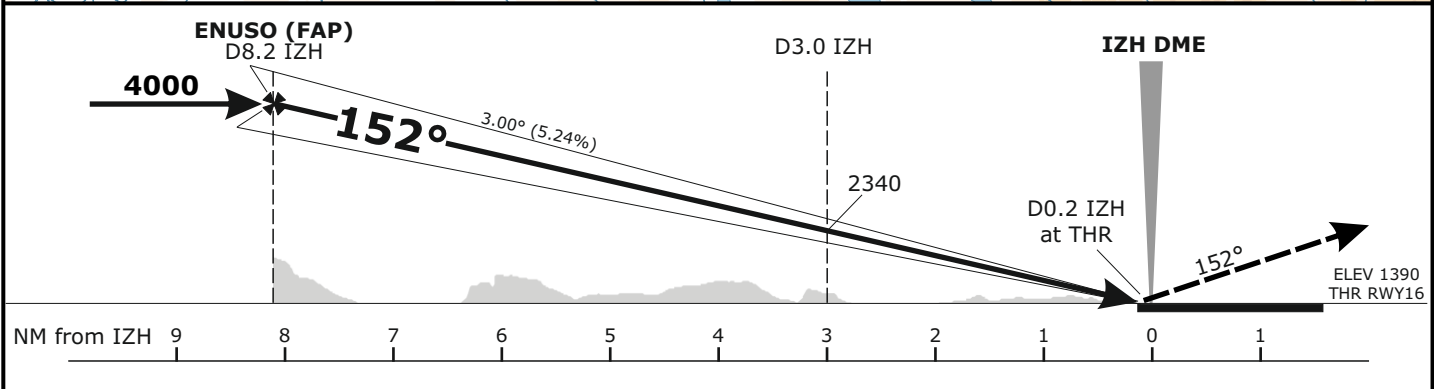
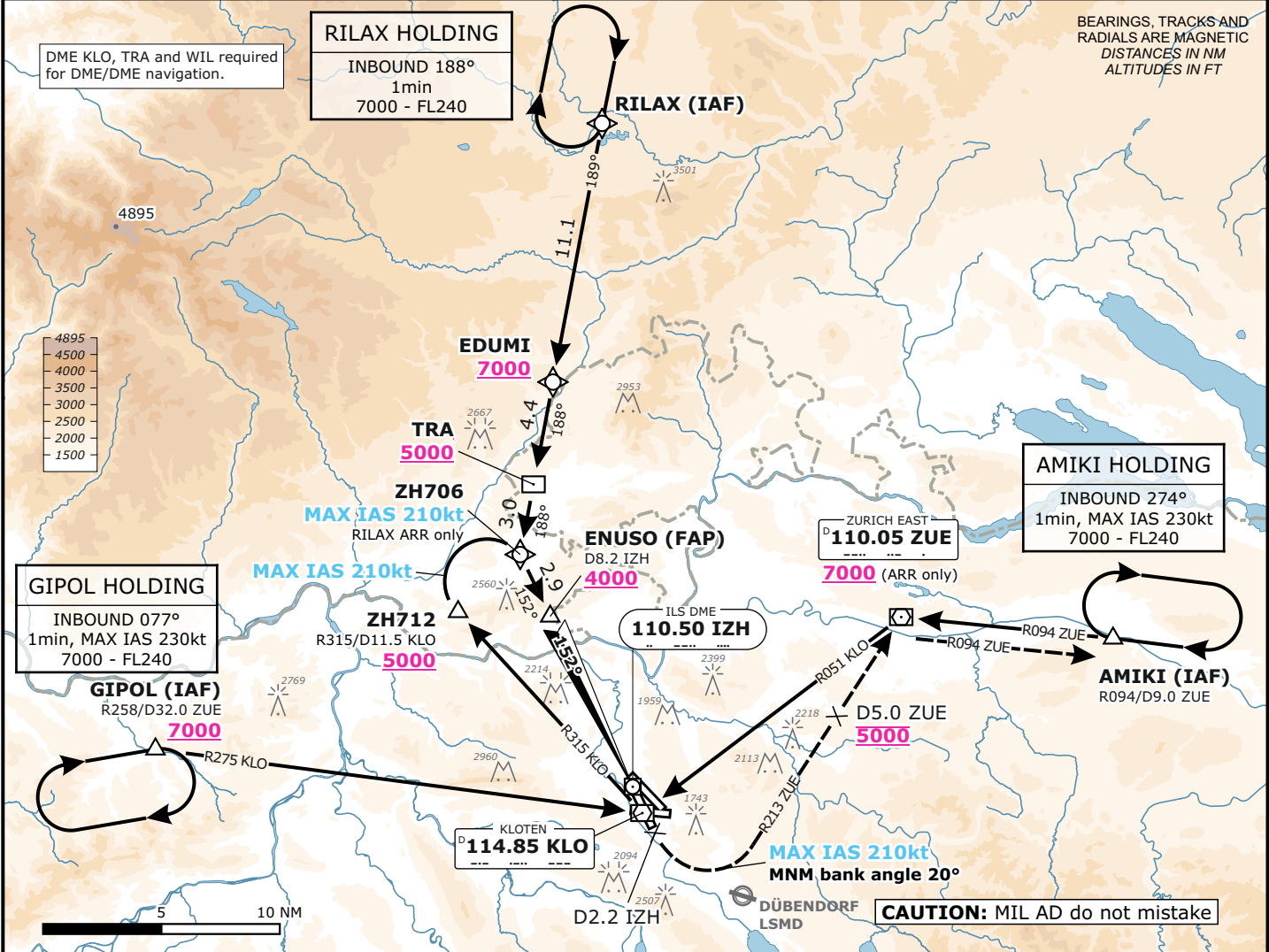
ZURICH, SWITZERLAND

APCH CHART NO. 16-2
Revision 25 JAN 24

ILS
RWY 16

Frequencies			Missed Approach			MSA LSZH ARP		
Swiss Radar	135.015	133.050	Climb straight ahead. Initial climb to 5000 . At D2.2 IZH past the station turn LEFT (MAX IAS 210kt, MNM bank angle 20°) to intercept R213 to ZUE. At D5.0 ZUE to the station continue climb to 7000 . Proceed to ZUE. Cross ZUE at MNM 6000 and intercept R094 from ZUE. Proceed to AMIKI.			Outer Circle: 25 NM Inner Circle: 17 NM		
Zurich Arrival	135.230	130.560						
Zurich Final	125.330	-						
Zurich Tower	118.100	120.230						
Zurich Apron	121.755	121.855						
Zurich ATIS	125.730	-	AD ELEV 1417ft	TRANS LVL by ATC	TRANS ALT 7000			

Valid for flight simulation use only - do not use for real life navigation



	Minima				RA	RVR
	DA (H)					
	CAT A	CAT B	CAT C	CAT D		
CAT I	1590 (200)				187	550m
CAT II	1490 (100)				93	300m
CAT IIIa	50					200m
CAT IIIb						75m

Changes: 8.33kHz frequencies