

LSZH/ZRH

ZURICH, SWITZERLAND

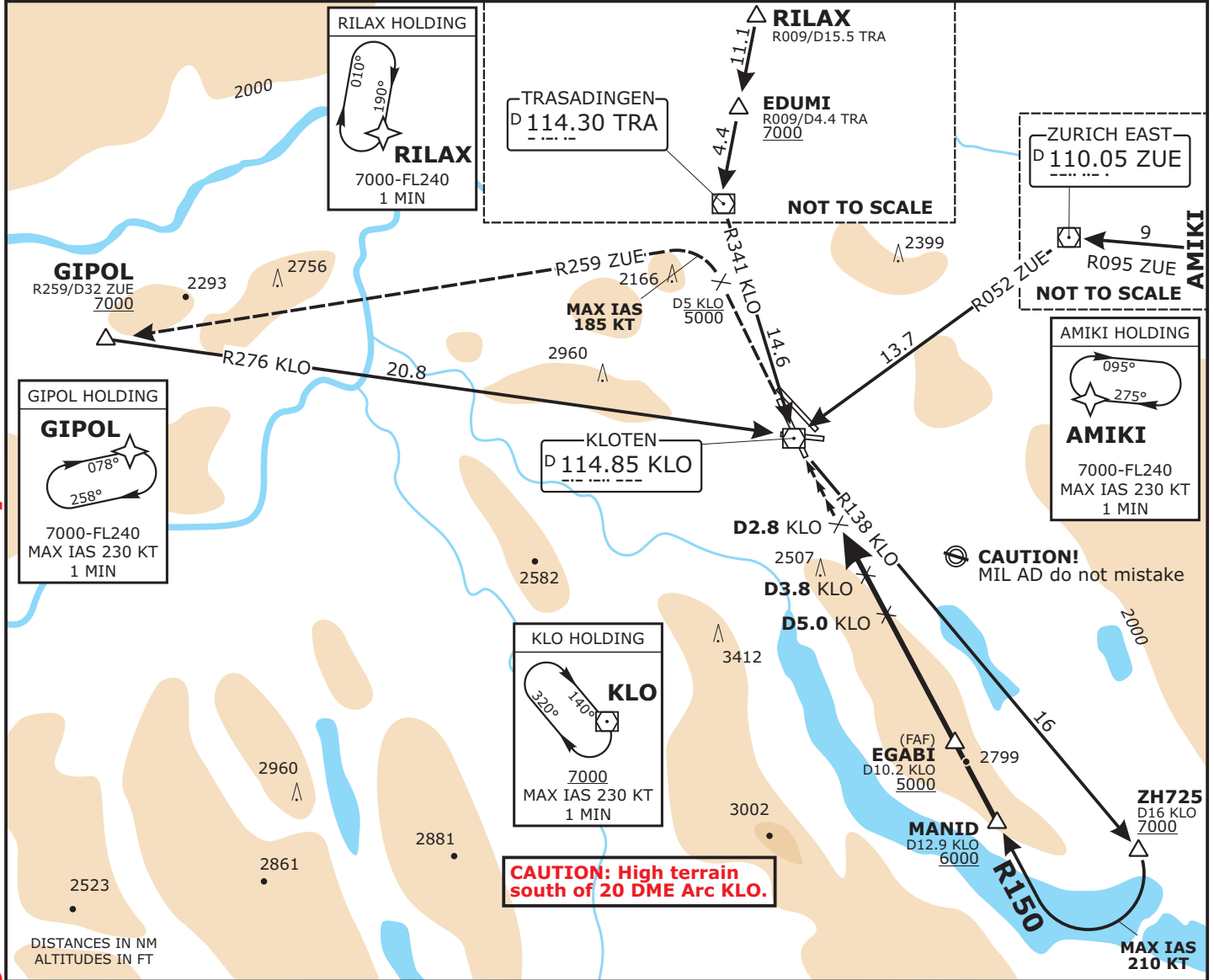
APP CHART NO.9
Revision 12 NOV 15

VOR DME
RWY 34

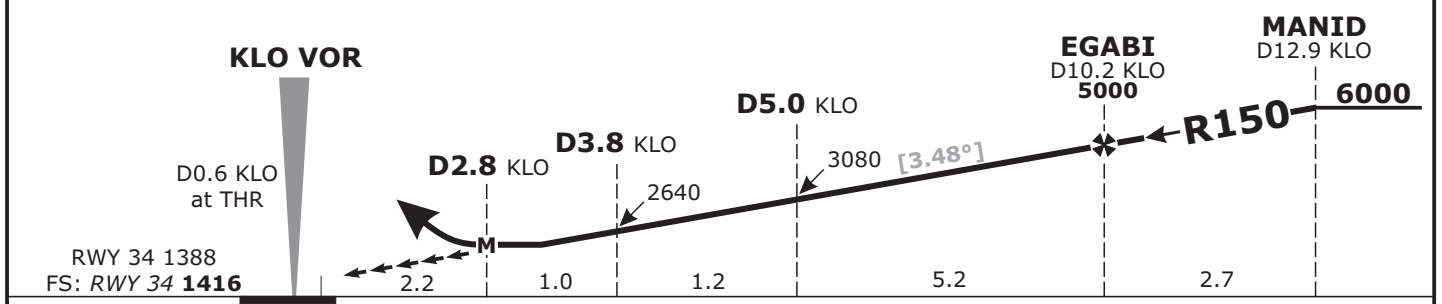
SWISS Radar LSAS_CTR 128.05	ZURICH Arrival LSZH_APP LSZH_W_APP 135.22 118.00	ZURICH Final LSZH_F_APP 125.32	ZURICH Tower LSZH_TWR 118.10	ZURICH Apron LSZH_S_GND LSZH_N_GND 121.75 121.85	ZURICH ATIS LSZH_ATIS 125.72
VOR KLO 114.85	Intercept Radial 150°	Minimum Altitude EGABI 5000 (3620)	DA(H) 2430 (1050)	Apt Elev 1417 FS: RWY 1416 RWY 1388	MSA KLO 25 NM (17 NM) 5700 4500 4500 5900 9200

MISSED APCH: Climb on R150 KLO. Initial climb to **5000**. When passing KLO, continue on R330 KLO. At D5 KLO past the station turn LEFT (MAX IAS 185 KT during turn). Intercept R259 from ZUE. Continue climb to **7000**. Proceed to GIPOL.

Alt Set: hPa Rwy Elev: 51 hPa Trans level: By ATC Trans alt: 7000



KLO DME	4.0	5.0	6.0	7.0	8.0	9.0	10.0	11.0	12.0
ALTITUDE	2710	3080	3450	3820	4190	4560	4930	5300	5670



Flight Simulator-OPS STRAIGHT-IN APPROACH RWY 34 DA(H): 2430 (1050) Visibility 4500m, Ceiling 1200 AGL	Gnd speed-Kts	70	90	100	120	140	160
	ROD ILS GS 3.48° or LOC Descent Gradient 6.1%	431	554	615	739	862	986
	MAP at D2.8 KLO						

Valid for flight simulation use only - do not use for real life navigation

CHANGES: Radials, missed APCH, MSA