

Valid for flight simulation use only - do not use for real life navigation

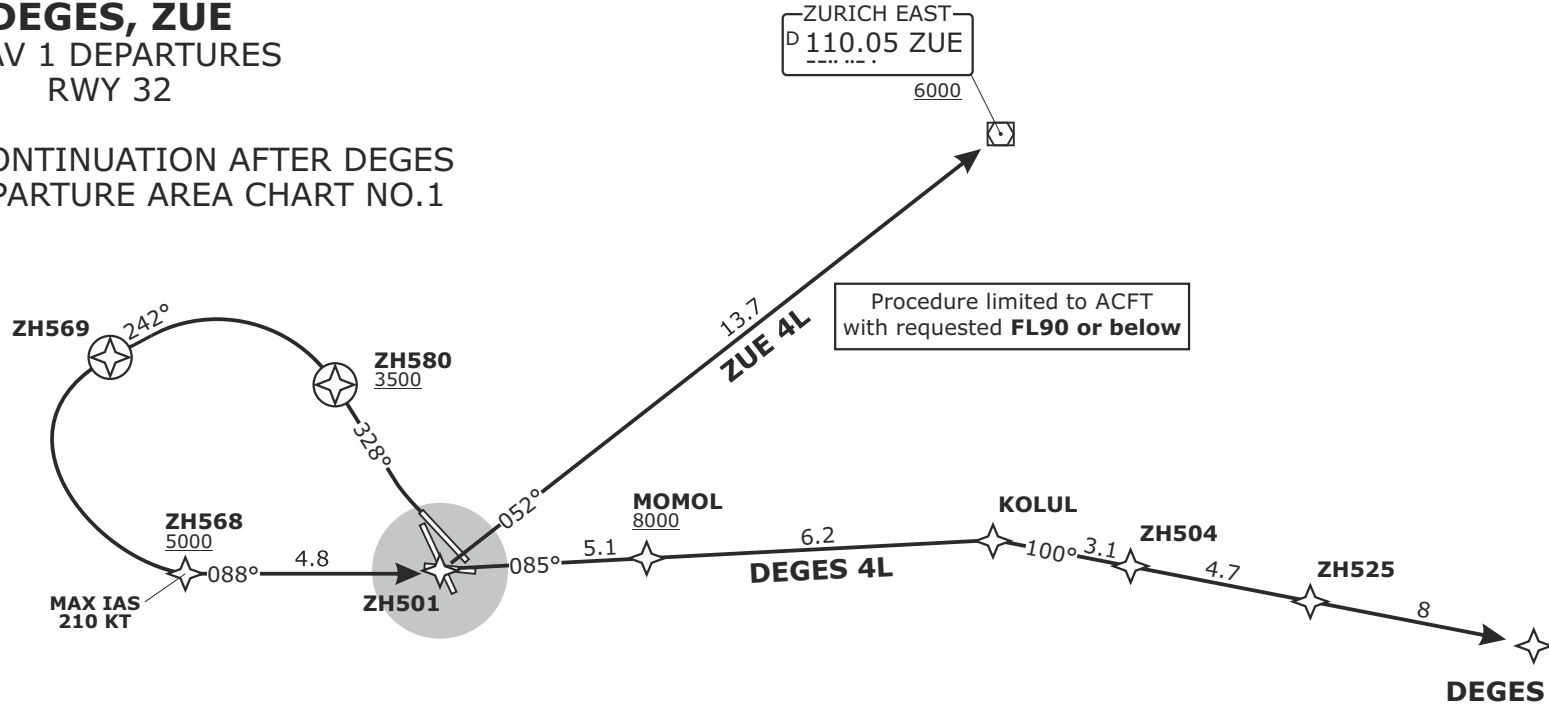
© VACC Switzerland

www.vacc.ch

charts@vacc.ch

DEGES, ZUE RNAV 1 DEPARTURES RWY 32

FOR ROUTE CONTINUATION AFTER DEGES
REFER TO DEPARTURE AREA CHART NO.1



SPEED RESTRICTION
MAX IAS 250 KT below FL100

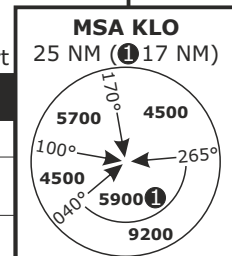
NOT TO SCALE

DISTANCES IN NM
ALTITUDES IN FT

Altitude and speed restrictions see graphical chart

Initial climb clearance **5000**

SID	RWY	ROUTING
DEGES 4L	32	Climb straight ahead. Intercept track 328° to ZH580. At ZH580 turn LEFT. Intercept track 242° to ZH569. At ZH569 turn LEFT direct to ZH568. At ZH568 proceed via ZH501, MOMOL, KOLUL, ZH504 and ZH525 to DEGES.
ZUE 4L		Climb straight ahead. Intercept track 328° to ZH580. At ZH580 turn LEFT. Intercept track 242° to ZH569. At ZH569 turn LEFT direct to ZH568. At ZH568 proceed via ZH501 to ZUE.



SWISS Radar LSAS_CTR 128.05	ZURICH AP LSZH_APP 135.22	ZURICH Arrival LSZH_W_APP 118.00	ZURICH Departure LSZH_DEP 125.95
Apt Elev 1417			Alt Set: hPa (IN on request) Trans level: by ATC Trans alt: 7000

LSZH/ZRH
ZURICH, SWITZERLAND

SID CHART NO.3
Revision 03 DEC 20

RNAV 1
DEGES/ZUE