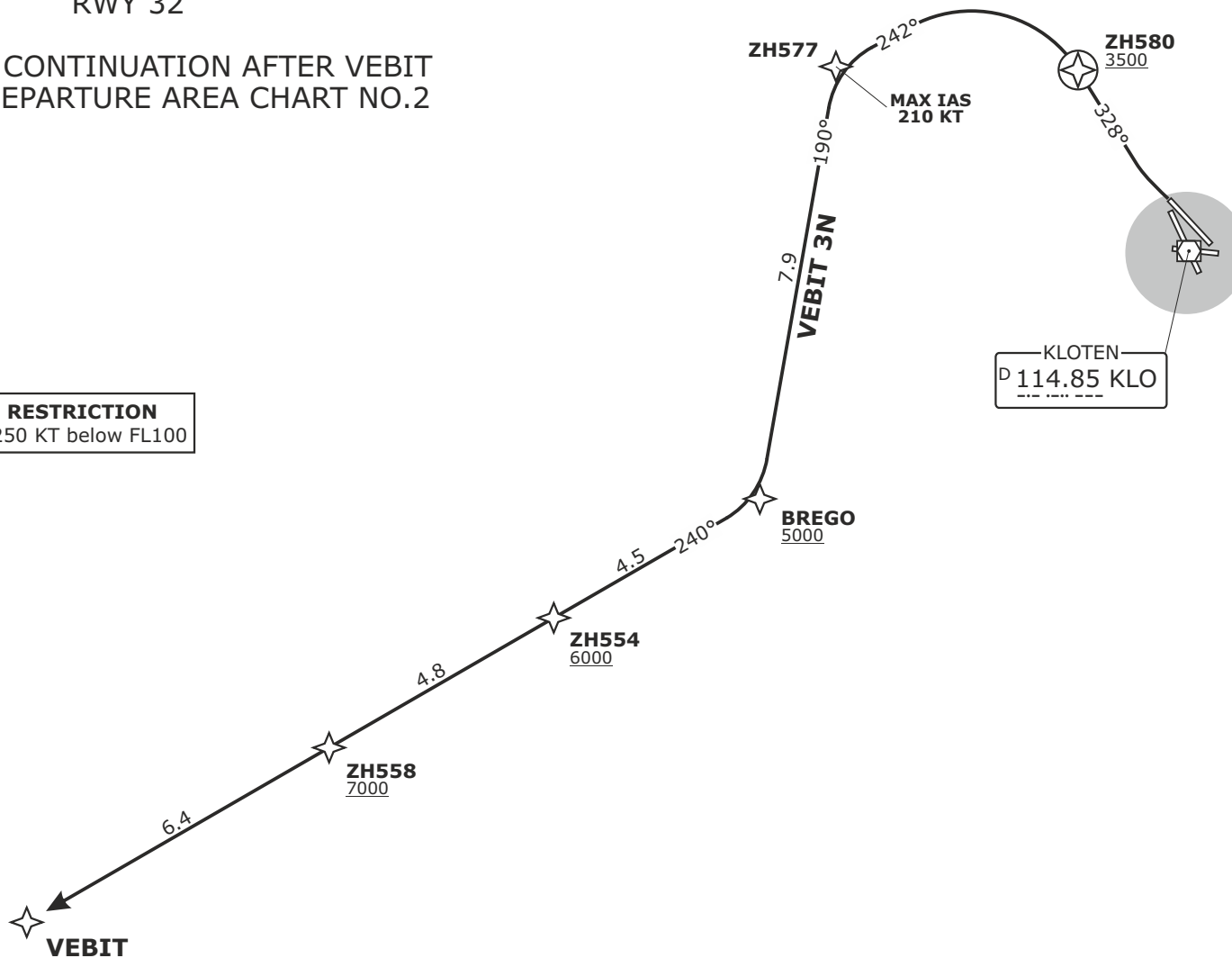


**VEBIT**  
RNAV 1 DEPARTURE  
RWY 32

FOR ROUTE CONTINUATION AFTER VEBIT  
REFER TO DEPARTURE AREA CHART NO.2

**SPEED RESTRICTION**  
MAX IAS 250 KT below FL100

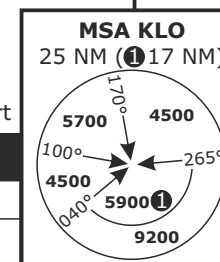


Altitude and speed restrictions see graphical chart

**Initial climb clearance 5000**

SID	RWY	ROUTING
<b>VEBIT 3N</b>	<b>32</b>	Climb straight ahead. Intercept track 328° to ZH580. At ZH580 turn LEFT. Intercept track 242° to ZH577. Proceed via BREGO, ZH554 and ZH558 to VEBIT.

DISTANCES IN NM  
ALTITUDES IN FT



SWISS Radar LSAS_CTR 128.05	ZURICH Arr LSZH_APP 135.22	ZURICH Arrival LSZH_W_APP 118.00	ZURICH Departure LSZH_DEP 125.95	Apt Elev <b>1417</b>	Alt Set: hPa (IN on request) Trans level: by ATC Trans alt: 7000
-----------------------------------	----------------------------------	--	--	-------------------------	--

**LSZH/ZRH**  
ZURICH, SWITZERLAND

SID CHART NO.5  
Revision 03 DEC 20

**RNAV 1**  
**VEBIT**