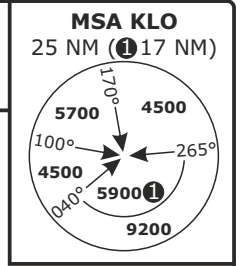


Valid for flight simulation use only - do not use for real life navigation

SWISS Radar LSAS_CTR 128.05	ZURICH Arrival LSZH_APP 135.22	LSZH_W_APP 118.00	ZURICH Departure LSZH_DEP 125.95	Apt Elev <b>1417</b>	Alt Set: hPa (IN on request) Trans level: by ATC Trans alt: 7000
-----------------------------------	--------------------------------------	----------------------	--	-------------------------	--

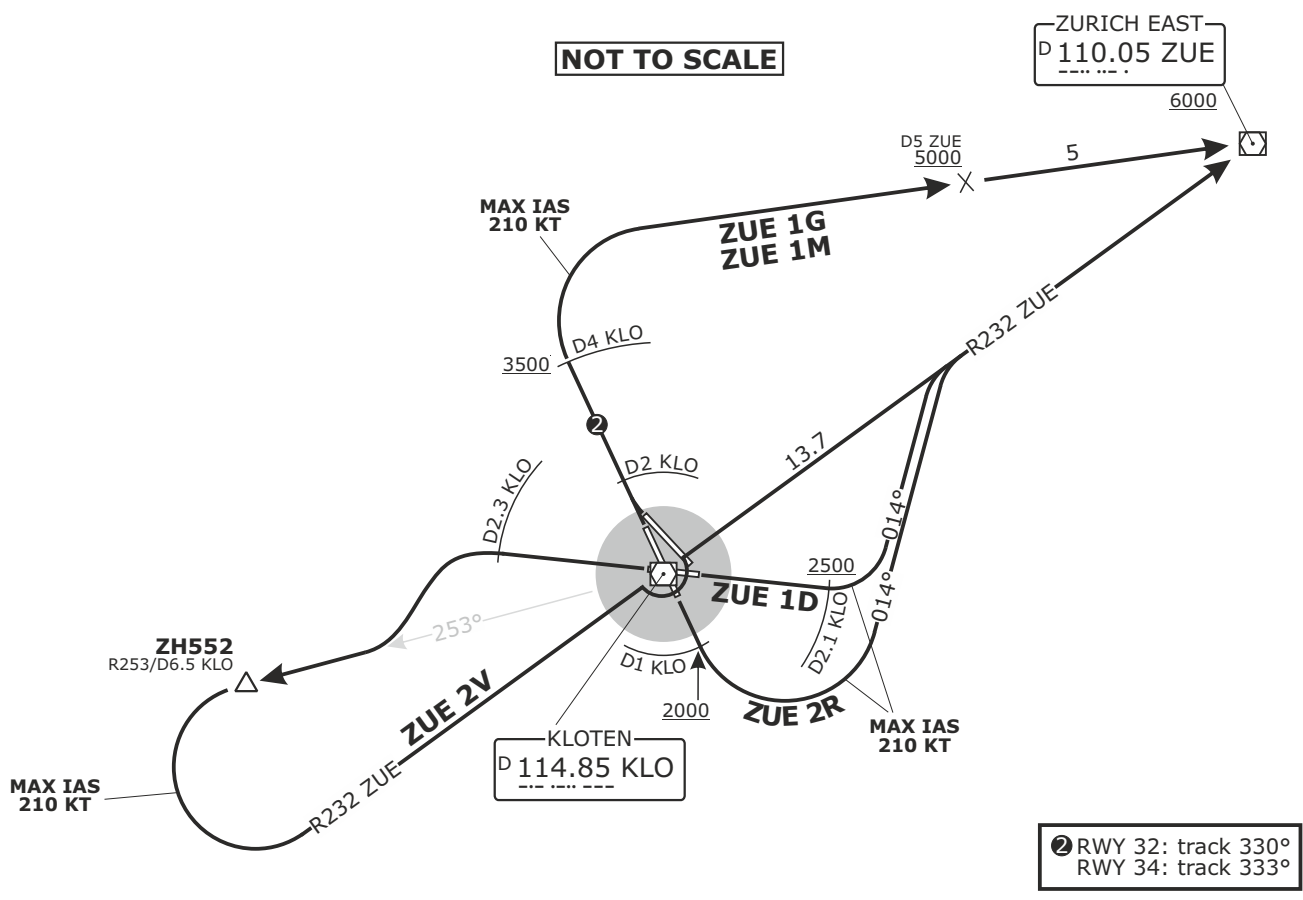


**ZURICH EAST**  
NON-RNAV DEPARTURES  
RWYS 10, 16, 28, 32, 34

FOR ROUTE CONTINUATION AFTER ZUE  
REFER TO DEPARTURE AREA CHART NO.1

**SPEED RESTRICTION**  
MAX IAS 250 KT below FL100

Procedure limited to ACFT  
with requested **FL90 or below**



DISTANCES IN NM  
ALTITUDES IN FT

Altitude and speed restrictions see graphical chart

**Initial climb clearance 5000**

SID	RWY	ROUTING
<b>ZUE 1D</b>	<b>10</b>	Climb straight ahead. At <b>2500</b> but not before D2.1 KLO turn LEFT onto track 014°, intercept R232 to ZUE. Proceed to ZUE.
<b>ZUE 1G</b>	<b>34</b>	Climb on track 333°. At D4 KLO turn RIGHT and proceed to ZUE.
<b>ZUE 1M</b>	<b>32</b>	Climb straight ahead. At D2 KLO turn RIGHT onto track 330°. At D4 KLO turn RIGHT and proceed to ZUE.
<b>ZUE 2R</b>	<b>16</b>	Climb straight ahead. At <b>2000</b> but not before D1 KLO turn LEFT onto track 014°, intercept R232 from ZUE. Proceed to ZUE.
<b>ZUE 2V</b>	<b>28</b>	Climb straight ahead. At D2.3 KLO turn LEFT, intercept R253 from KLO. At ZH552/D6.5 KLO or when instructed by ATC, turn LEFT, intercept R232 from ZUE. Proceed to ZUE.

CHANGES: ZUE 3F/3L withdrawn, TRA decommissioned