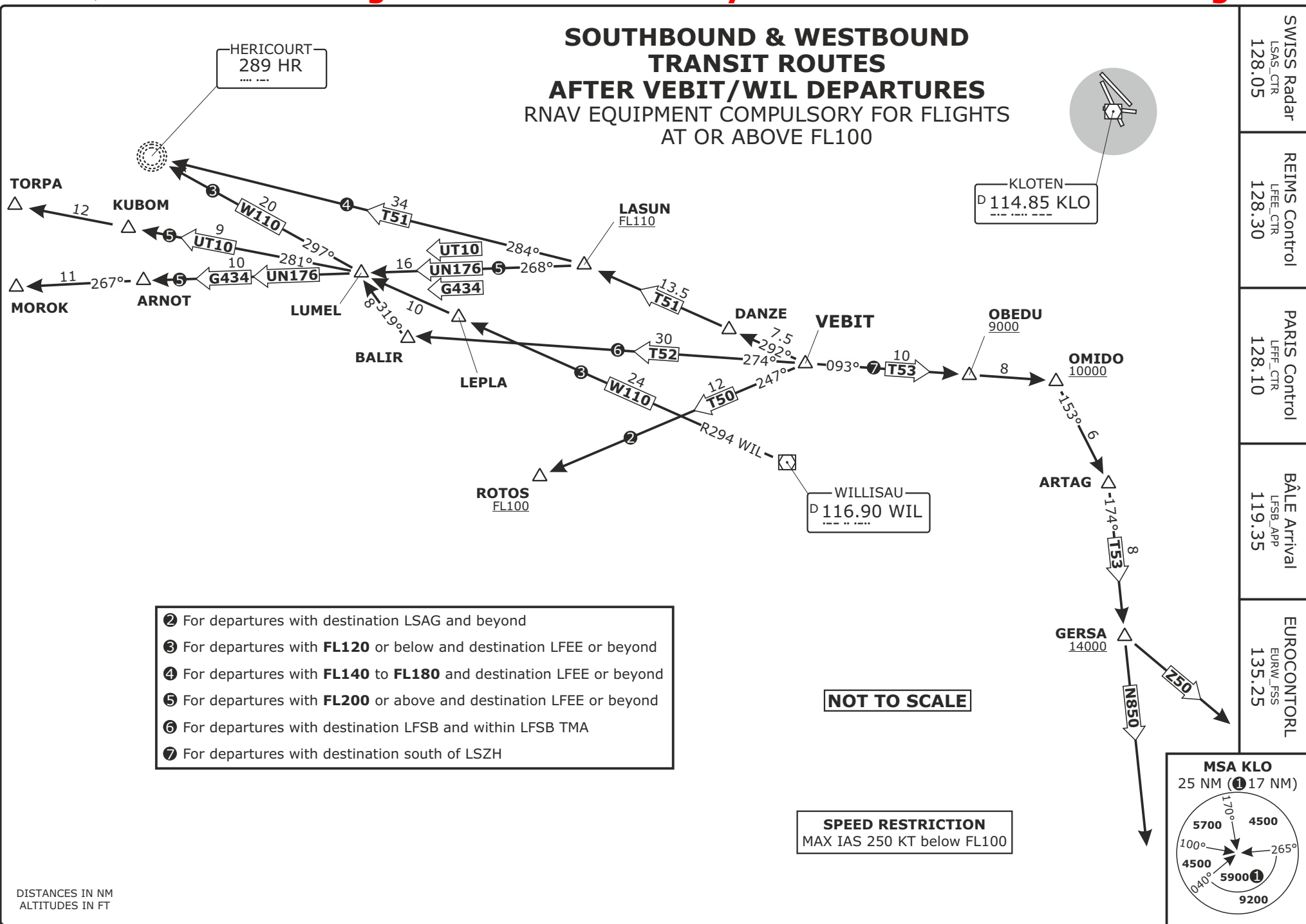


SOUTHBOUND & WESTBOUND TRANSIT ROUTES AFTER VEBIT/WIL DEPARTURES

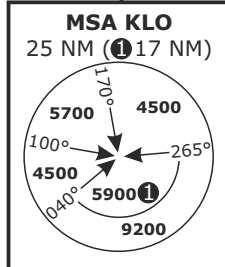
RNAV EQUIPMENT COMPULSORY FOR FLIGHTS
AT OR ABOVE FL100



- ② For departures with destination LSAG and beyond
- ③ For departures with **FL120** or below and destination LFEE or beyond
- ④ For departures with **FL140** to **FL180** and destination LFEE or beyond
- ⑤ For departures with **FL200** or above and destination LFEE or beyond
- ⑥ For departures with destination LFSB and within LFSB TMA
- ⑦ For departures with destination south of LSZH

NOT TO SCALE

SPEED RESTRICTION
MAX IAS 250 KT below FL100



SWISS Radar
LSAS_CTR
128.05

REIMS Control
LFEE_CTR
128.30

PARIS Control
LFEE_CTR
128.10

BÂLE Arrival
LFSB_APP
119.35

EUROCONTORL
EURW_FSS
135.25

LSZH/ZRH
ZURICH, SWITZERLAND

DEPARTURE AREA CHART NO. 2
Revision 03 DEC 20

VEBIT/WIL
AREA