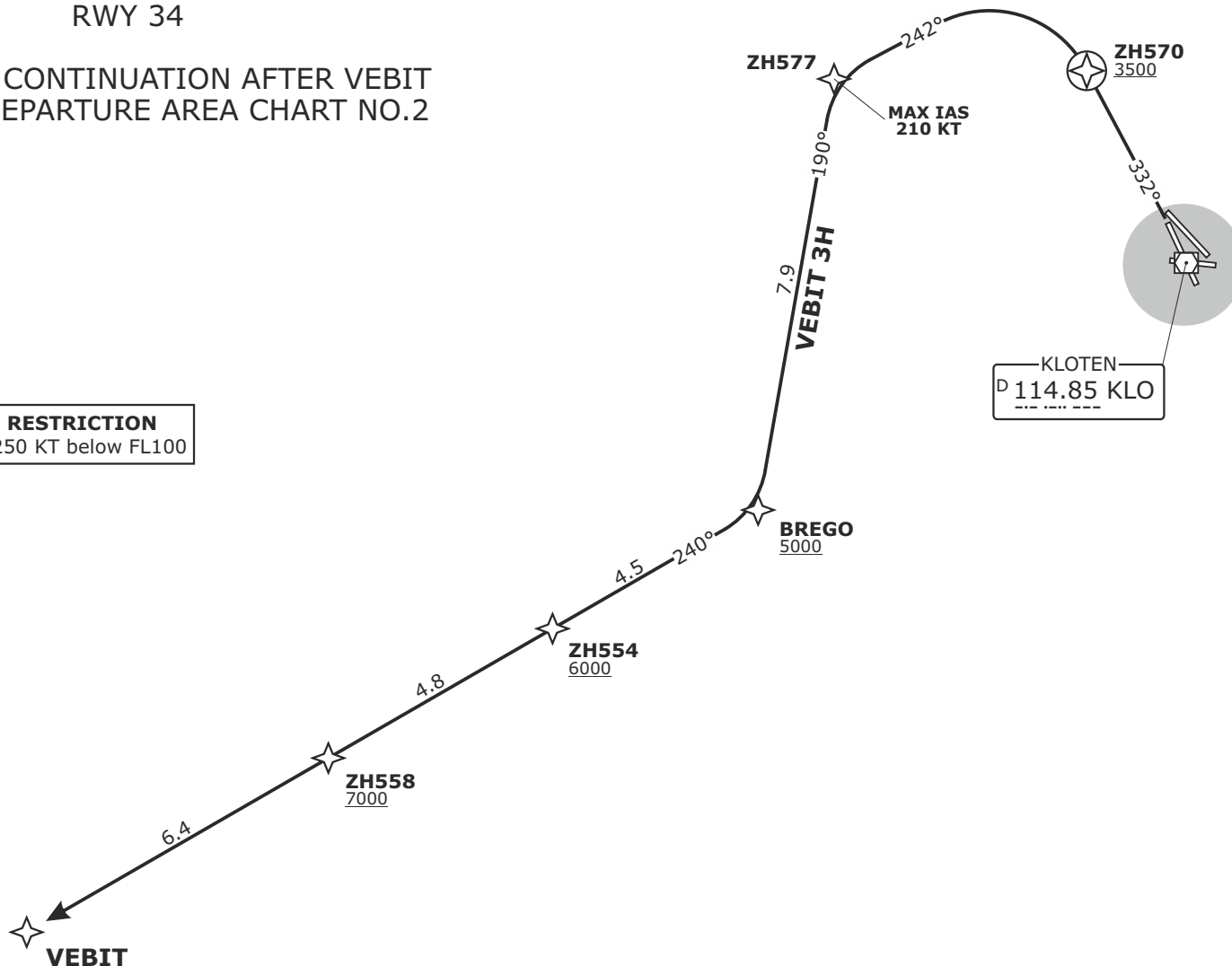


VEBIT
RNAV 1 DEPARTURE
RWY 34

FOR ROUTE CONTINUATION AFTER VEBIT
REFER TO DEPARTURE AREA CHART NO.2

SPEED RESTRICTION
MAX IAS 250 KT below FL100

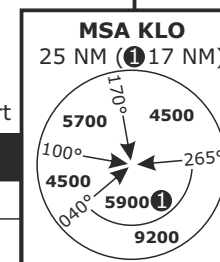


Altitude and speed restrictions see graphical chart

Initial climb clearance 5000

SID	RWY	ROUTING
VEBIT 3H	34	Climb on track 332° to ZH570. At ZH570 turn LEFT. Intercept track 242° to ZH577. Proceed via BREGO, ZH554 and ZH558 to VEBIT.

DISTANCES IN NM
ALTITUDES IN FT



SWISS Radar LSAS_CTR 128.05	ZURICH AP LSZH_APP 135.22	ZURICH Arrival LSZH_W_APP 118.00	ZURICH Departure LSZH_DEP 125.95	Apt Elev 1417	Alt Set: hPa (IN on request) Trans level: by ATC Trans alt: 7000
-----------------------------------	---------------------------------	--	--	-------------------------	--

LSZH/ZRH
ZURICH, SWITZERLAND

SID CHART NO.6
Revision 03 DEC 20

RNAV 1
VEBIT