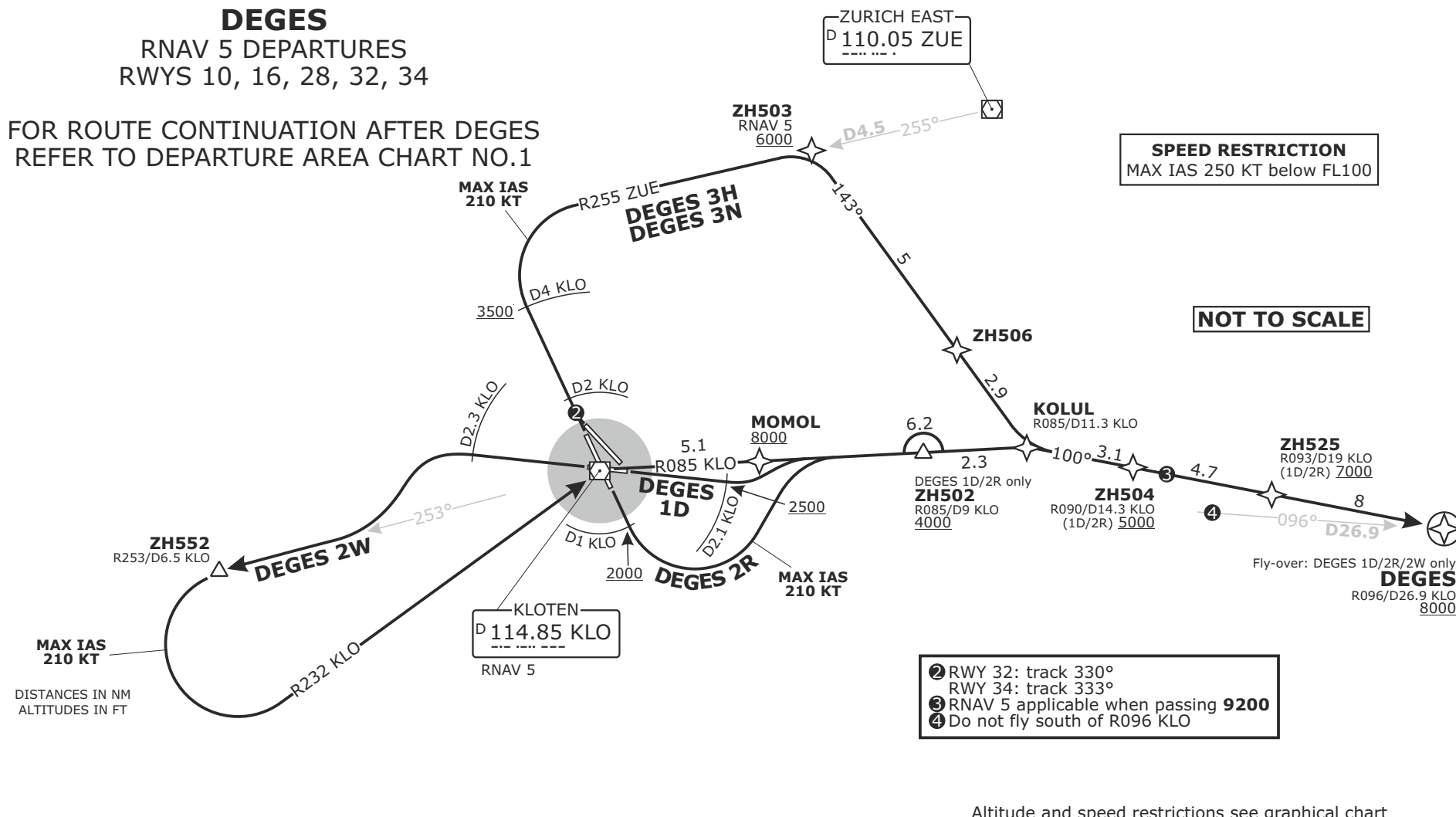


# DEGES

RNAV 5 DEPARTURES  
RWYS 10, 16, 28, 32, 34

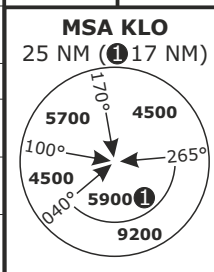
FOR ROUTE CONTINUATION AFTER DEGES  
REFER TO DEPARTURE AREA CHART NO.1



<b>LSZH/ZRH</b>	<b>ZURICH, SWITZERLAND</b>	<b>SID CHART NO.7</b>	<b>Revision 03 DEC 20</b>
SWISS Radar LSAS_CTR 128.05	ZURICH Arrval LSZH_W_APP 118.00	ZURICH Departure LSZH_DEP 125.95	Apt Elev <b>1417</b>
ZURICH AP LSZH_APP 135.22			Alt Set: hPa (IN on request) Trans level: by ATC Trans alt: 7000

## Initial climb clearance 5000

SID	RWY	ROUTING
<b>DEGES 1D</b>	<b>10</b>	Climb straight ahead. At <b>2500</b> but not before D2.1 KLO turn LEFT, intercept R085 from KLO. Proceed via ZH502, KOLUL, ZH504 and ZH525 to DEGES.
<b>DEGES 3H</b>	<b>34</b>	Climb on track 333°. At D4 KLO turn RIGHT, intercept R255 to ZUE. Proceed via ZH503, ZH506, KOLUL, ZH504 and ZH525 to DEGES.
<b>DEGES 3N</b>	<b>32</b>	Climb straight ahead. At D2 KLO turn RIGHT onto track 330°. At D4 KLO turn RIGHT, intercept R255 to ZUE. Proceed via ZH503, ZH506, KOLUL, ZH504 and ZH525 to DEGES.
<b>DEGES 2R</b>	<b>16</b>	Climb straight ahead. At <b>2000</b> but not before D1 KLO turn LEFT, intercept R085 from KLO. Proceed via ZH502, KOLUL, ZH504 and ZH525 to DEGES.
<b>DEGES 2W</b>	<b>28</b>	Climb straight ahead. At D2.3 KLO turn LEFT, intercept R253 from KLO. At ZH552/D6.5 KLO or when instructed by ATC, turn LEFT and intercept R232 to KLO. Proceed via KLO, MOMOL, KOLUL, ZH504, ZH525 to DEGES.



**DEGES**  
**RNAV5**